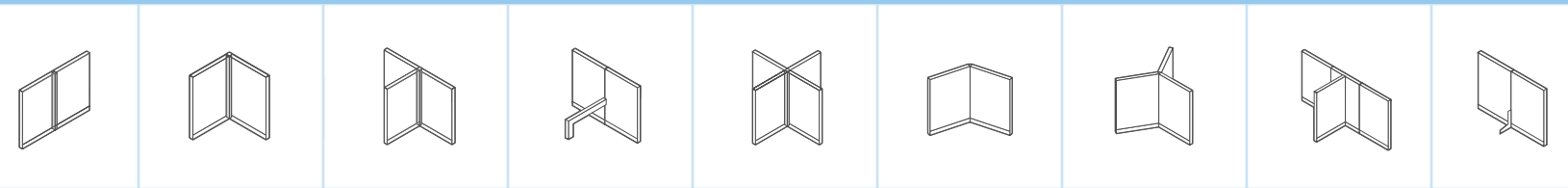


# f l e x i b l e   i n s i d e .

We humans love simple solutions to complex problems. An Answer® system solution is one of the simplest. Comprised of very basic components, Answer can be configured in a snap. And reconfigured in another snap. Answer was engineered to give you more options with less waste and cost than fixed panels can. Just think: you could warehouse or purchase fewer components, yet still be able to reshape your workplace entirely.



# flexible outside.

Do more with less. Answer was designed to satisfy a broad range of needs. Every Answer panel can become a wide panel, a narrow panel, a short panel, or a tall panel. In very little time. And with very little effort. Because Answer is so flexible inside you can choose precisely the style and performance you need outside, whenever and wherever you need it. Then change it all tomorrow. That's flexibility redefined.

a unique answer.



Look around. See any two people who are exactly alike? Each person has different needs, different work, and different ways of working. But while each person is unique, their workstations are often very much alike.

Answer gives you options. Tall, short, private, social, lots of storage or just a little—you can create spaces as varied as the people who occupy them.





1

1 Move technology off the worksurface and still stay connected, with Answer Technology Skins at shelf or bin height.



2



3



4

2 Answer's flexibility makes it simple to decrease panel heights when increased collaboration between people is desired.

3, 4 Answer solutions provide an incredible range of storage options – towers, overhead bins, bookcases and shelves, to name a few.

5 120-degree planning helps support different workstyles.

Height-adjustable worksurfaces provide comfort and ergonomic support. By turning a handle you can simply adjust the worksurface from 26 1/8" to 39".

a balanced answer.



2



3



Ever had to whisper to call your doctor? Wear headphones to block out noise? “Hide” from coworkers in order to concentrate? Then you know about the importance of privacy in the workplace.

But total privacy may not be the right solution either. Everyone needs different levels of privacy. Answer helps you negotiate those differences by providing a flexible workplace solution that can be adapted to a variety of needs.

**1** Answer windows can open up a space while still supporting privacy.

Mobile privacy screens can help you avoid unwanted distractions.

**2** Need a lot of privacy? Answer panels stack to 90" in height, perfect for private offices, group, or team spaces.

**3** Increase privacy without increasing panel height by “up-mounting” storage bins.

**4** Removable panel-top screens are a quick way to add privacy when it’s time to focus.



an answer that reflects your personality.



Your space says a lot about who you are. It reflects your personality and your culture. Answer solutions give you the freedom to create spaces as unique as you are. And because of Answer's built-in flexibility, it's simple to update that look when it's time for a change.

# #1

The #1 issue lacking in environments are spaces that stimulate and inspire.



Wood trims can add sophistication to any work environment.





Select from a broad range of aesthetic options, including:

Slatwall



Paints

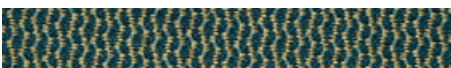
Laminates



Glass

Ribbed steel

Perforated steel



Smooth steel

Fabrics



Markerboard

Wood



Answer also accommodates a large array of custom materials. See "Surface Materials" in the back of this brochure for more details.

a visual answer.





1

Want people to share their knowledge with others?  
Have important conversations outside of meetings?  
Transfer information throughout the organization?  
Remember things more easily? Studies show that visual display triggers memory, which can help trigger ideas. Show it to others—and keep it in front of them.

Answer can make information accessible and visible.

**1** Markerboard surfaces make it simple to capture and share thoughts.

**2** Tackable-acoustical skins keep things visible, like a chart or a photo.

Open-side storage towers combine shelves, drawers and a coat closet into one space saving unit.

Slatwall allows for personalization and helps to keep files and tools close at hand.



2

## an interactive answer.

How do you help people accomplish more, work together, share ideas, and interact spontaneously, while still enabling them to stay focused?

By creating open spaces that encourage collaboration and sharing, Answer makes it simple.



# 66%

of workers consider conversation with others a valuable source of information.

1 Pathways® fence-height Post and Beam offers a light scale alternative to traditional panel “fin” walls.

Mobile storage provides storage where you need it most.



1



a strategic answer.



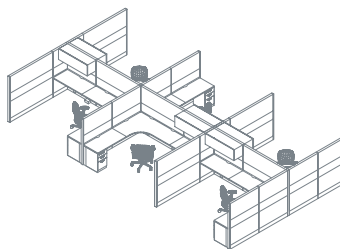
**Here's a challenge:**

How can you create a space that's flexible enough to respond to change, without adding complexity and cost?

**Here's the solution:**

Answer. With flexibility built-in, it's a breeze to install, expand, shrink and reconfigure your space. Answer can adapt with your organization, even if you don't know what the future holds.

**Here's an example:**



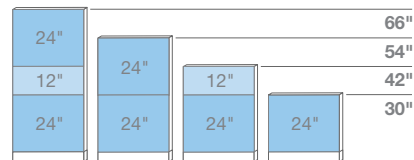
**Today**

Support individual work; provide a high degree of privacy

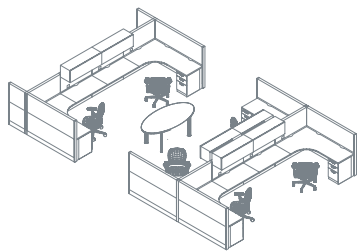
- 66" high panels provide standing-height privacy without stacking
- Power and communications are accessed in the panel base



- 1 All Answer panels can be monolithic, segmented or a combination of both.
- 2 An Answer panel can be connected off-module without damaging or defacing the panel it's connecting to.



Using 24" and 12" skins you can better leverage your initial investment. When it's time to change, you can reuse these skins in various combinations. That means less inventory. Less expense.



#### Tomorrow

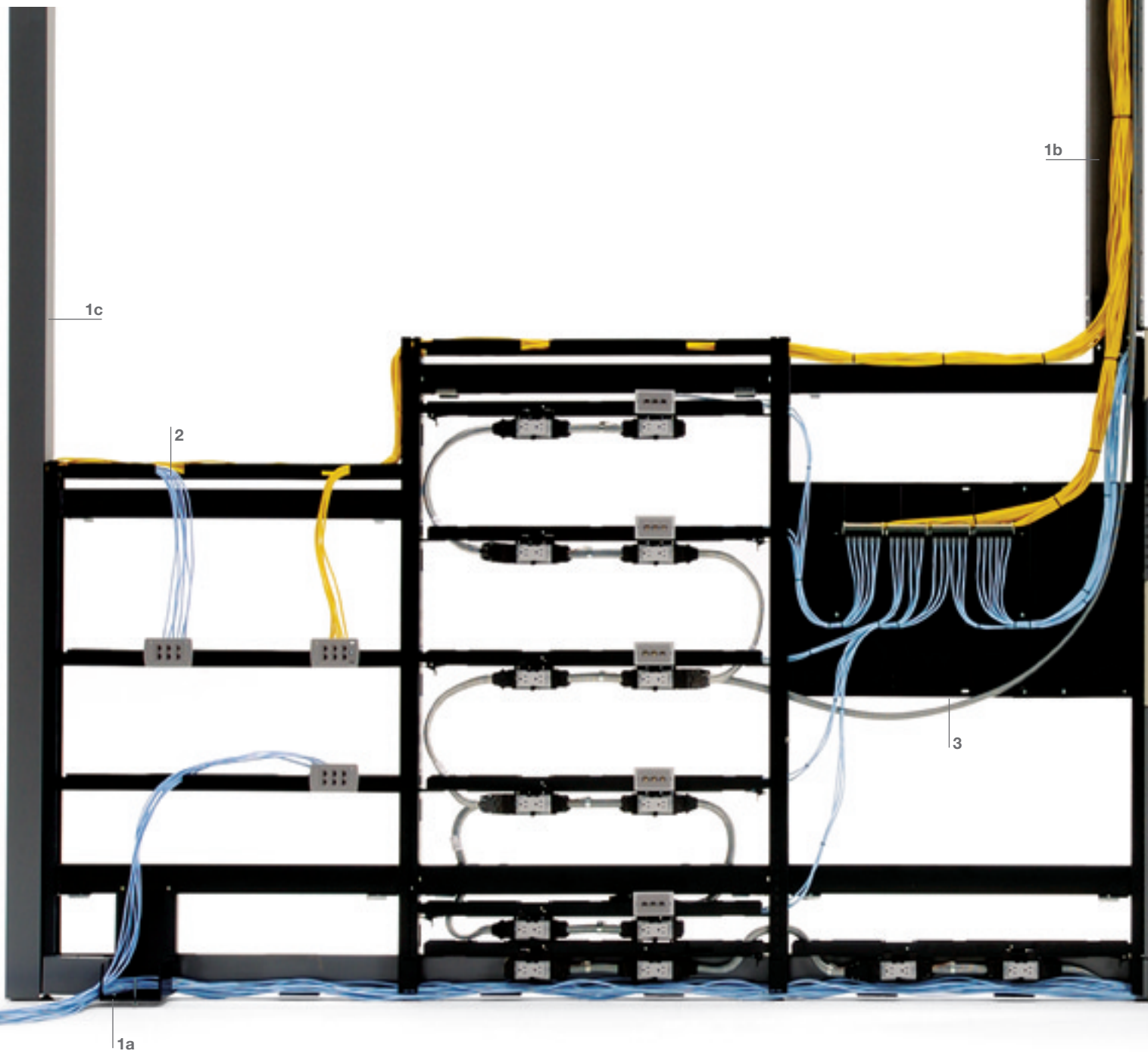
Support teams and individuals; encourage collaboration

- 54" high panels provide seated-height privacy, while still allowing interaction
- A shared mobile table supports impromptu meetings
- Power and communications are available at the worksurface for quick "plug and play" access

Here's the benefit:

= 20% real estate savings      95% Answer solution reused

a high-tech answer.





Answer solutions seamlessly weave together the building's infrastructure and technology with your furniture, to create a wired workplace designed for change. Answer's flexibility lets people sit down (or stand), get connected, and get to work.

Dual UL listed power system allows you to connect to panels, ceilings, under the floor, and inside walls in a most cost-efficient way.

Power and data placement is available every 12" vertically.

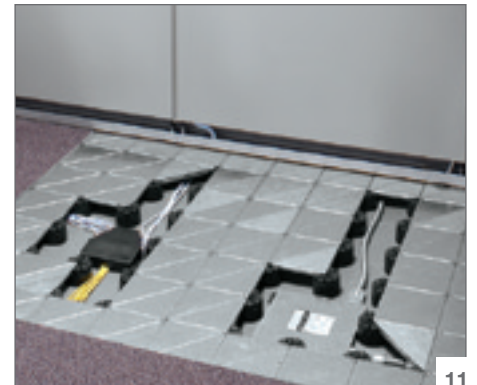
- 1 Utility packages for ceilings and floors let you install and reconfigure power and data easily
  - 1a floor access
  - 1b ceiling access
  - 1c utility pole
- 2 Horizontal and vertical lay-in cabling makes routing quick and easy
- 3 Consolidation Point Kit provides easy, cost effective reconfiguration
- 4 Answer Technology Skins provide convenient access to power and data
- 5 Receptacles and communication outlets can be located on skins (every 12" vertically)
- 6 Top cap lay-in cabling simplifies changing panel heights and reduces network disruptions
- 7 15-amp and 20-amp receptacles are interchangeable for all powerways
- 8 Multiple connection points let you direct power where you need it
- 9 Answer's patented design eliminates disruptions to your network when stacking
- 10 Overhead storage allows you to connect and secure worktools above the worksurface
- 11 Pathways Architectural Power, Pathways Zone Cabling, and Pathways Underscore® easily route power and data through the floor to wherever you need them



9



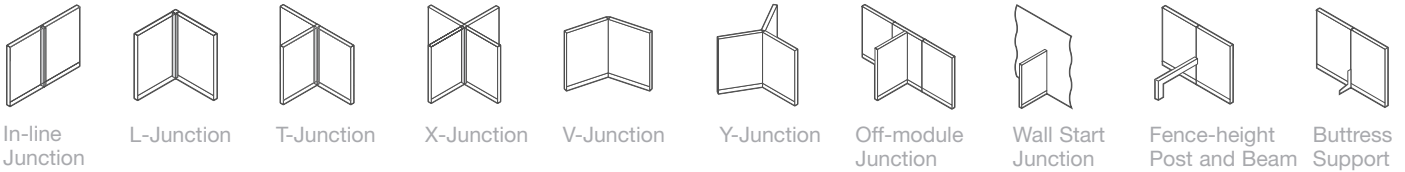
10



11

# a complete answer. Abbreviated Statement of Line

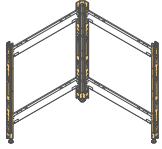
## Junctions and Connections



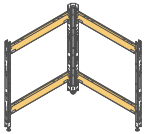
All junctions are stackable

## A Dynamic Panel

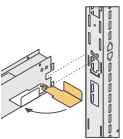
Flexible inside. Flexible outside.



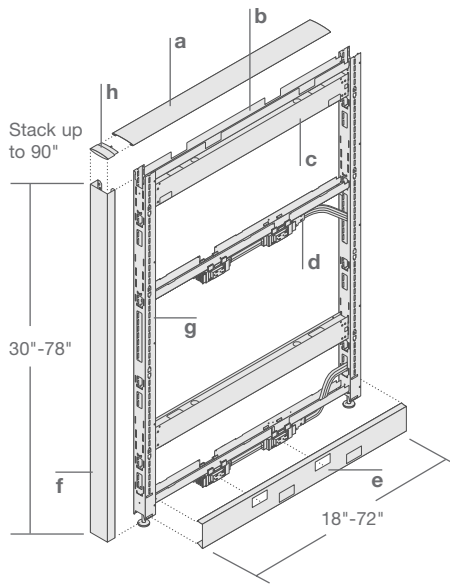
**Vertical Junctions** determine the panel's height. Slots are used to attach skins and hang components.



**Horizontal Connecting Bars** determine the panel's width. You can use the same horizontal bars no matter what junction height is used. This reduces cost and inventory.

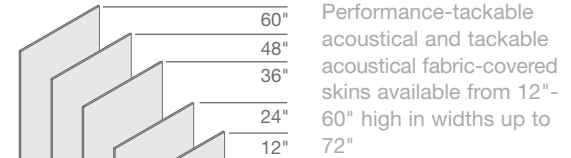


**Quick-lock Connections** make installing Answer quick and easy. Horizontal connecting bars have quick connectors on both ends that secure into slots on vertical junctions.

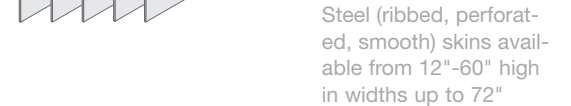


- a Top Cap
- b Cable Tray
- c Horizontal Bars
- d Powerkits
- e Base Trim
- f Trims
- g Junctions
- h Junction Caps

## Skins



Performance-tackable acoustical and tackable acoustical fabric-covered skins available from 12"-60" high in widths up to 72"



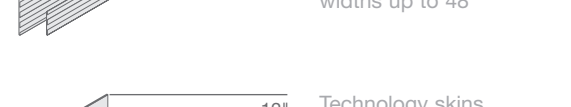
Steel (ribbed, perforated, smooth) skins available from 12"-60" high in widths up to 72"



Markerboard surface for steel skins available from 12"-36" high in widths up to 48"



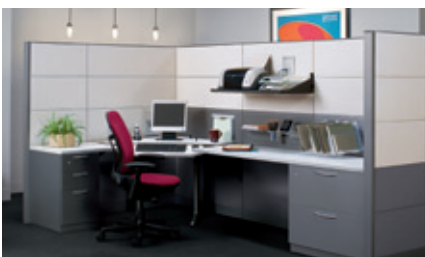
Slatwall skins available in 12" and 24" high in widths up to 48"



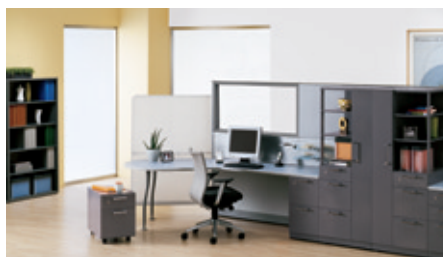
Technology skins available in 12" high in widths up to 72"



Glass and pass-thru windows available from 12"-48" high in widths up to 72"



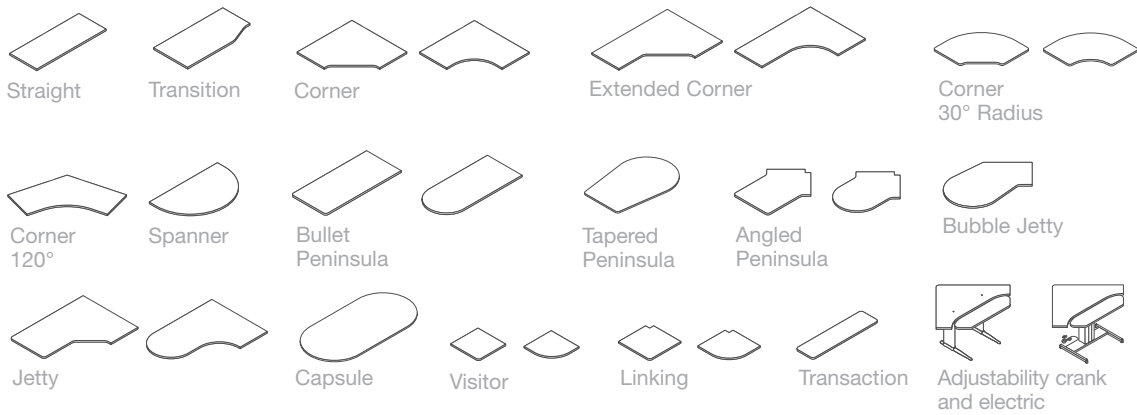
**Panels** – Trim: 4789 Sterling, Skins: DesignTex Adonis 6535-201; **Worksurfaces** – Mist 2811 Laminate; **Storage and Components** – 4798 Sterling, **Desk Seating** – Leap, Fabric: DesignTex Prairie Watermelon 5E76; **Lounge Seating** – Brayton Sidewalk, Fabric: DesignTex Prairie Watermelon 5E76



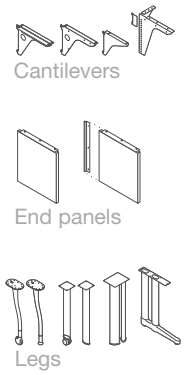
**Left: Panels** – Trim: 3742 Autumn Walnut, Skins: DesignTex Adonis 6535-202; **Worksurfaces** – 3742 Autumn Walnut; **Storage and Components** – 3742 Autumn Walnut; **Desk Seating** – Leap, Fabric: DesignTex Prairie Currant 5E75; **Right: Panels** – Trim: 4799 Platinum, Skins: Solitaire Camel P349, Glass: Lumicor® Blue Ice AC-800-401HK; **Worksurfaces** – Cloud 2U04; **Storage and Components** – 4799 Platinum; **Desk Seating** – Turnstone Let's B, Fabric: Buzz 2 5F12 Celery

\* check with local building inspector for usage guidelines

**Worksurfaces** (panel-supported and freestanding; available in laminate, wood and Corian®)

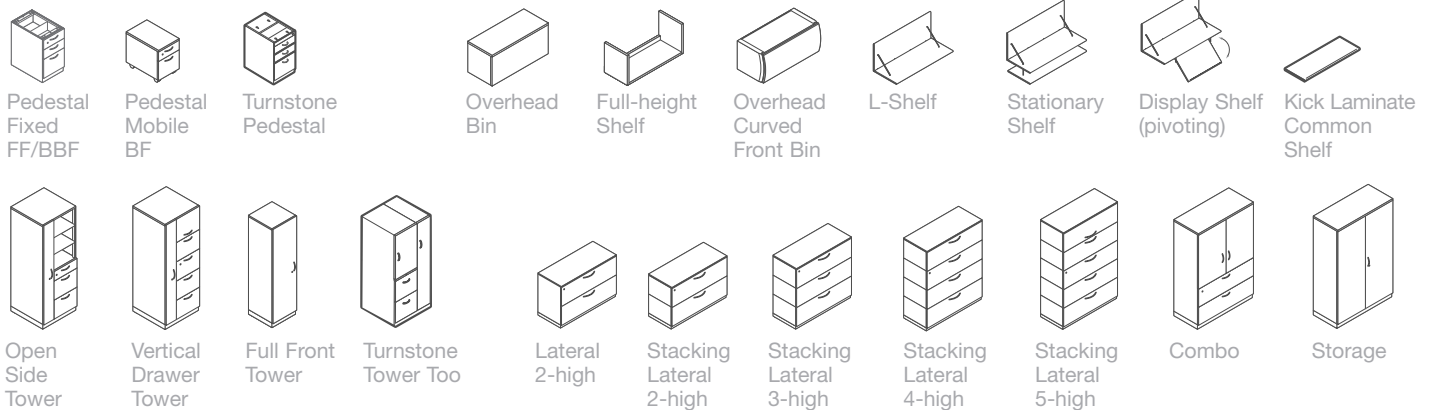


**Supports**



All Turnstone® Kick™ worksurfaces work with Answer system solutions.

**Storage** (available in metal and wood fronts)



Unison storage works with Answer system solutions.

**Works With**

Answer works with a broad range of Steelcase products including: Pathways Post and Beam, Universal Worksurface System, Unison™, Universal Storage, Turnstone Products, Kick Systems Furniture Components, Pathways Architectural Power, Pathways Zone Cabling, and Pathways Underscore®.

**Surface Materials**

Steelcase Classics, Options and Accents Collections of Textiles and Finishes, including clear and frosted glass and all 13 standard natural veneer finishes.

Custom Programs: Customer's Own Material, PerfectMatch™ Paint, Customiz™ Stain, Open Line Laminate, and an option for field-installed custom glass.

See the Answer Specification Guide for additional information.



**Panels** – Trim: 4799 Platinum, Skins: Markerboard;  
**Worksurfaces** – Mist 2811; **Storage and Components** – 4799 Platinum; **Desk Seating** – Turnstone Jersey, Fabric: Mesh T086 white, Seat: Black Leather



**Panels** – Trim: 7238 Fieldstone, Glass: Frosted 6530;  
**Worksurfaces** – 2722 Cream; **Storage and Components** – 7238 Fieldstone; **Desk Seating** – Turnstone Let's B, Fabric: DesignTex Prairie Cinnabar 5E74



**Panels** – Trim: 4799 Platinum, Skins: Options Moors Sky P374; **Worksurfaces** – Mist 2811 Laminate; **Storage and Components** – Upper Storage: 4799 Platinum, Lower Storage: 4752 Steel; **Desk Seating** – Leap, Fabric: DesignTex Prairie Watermelon 5E76



Call 800.333.9939 or  
visit [www.steelcase.com](http://www.steelcase.com)



Do what you do better.™

Item # 03-0001275 9.03 ©2003 Steelcase Inc. All rights reserved. All specifications subject to change without notice. Printed in U.S.A. on 100% post-consumer waste paper.