

# Key Manual

## Calibre

**Knoll**

# **THE KNOLL KEY MANUAL**

## **INTRODUCTION**

**The Knoll Key Manual was created to simplify and reduce the complexity of the specification, ordering process. It will also help answer general questions about keys/cores, installations of locks and related issues.**

**Each section of this manual contains three parts:**

- 1) General facts and information about the product line.**
- 2) A matrix containing the pattern numbers for keys, locks and housings.**
- 3) Color pictures of all keys, locks and housings.**

**Some highlights of the manual are:**

- \*Information by product line**
- \*Old pattern#'s - vs- new pattern#'s**
- \*Effectivity dates**
- \*Current production information**
- \*Discontinued product information**
- \*Helpful hints to determine what a customer needs**

**The information in this manual can be shared with other Knoll Associates, Customer and Knoll Dealers.**

**Knoll Key Manual Committee members:**

**Elsa Boorse, EG**

**Mary DeFazio, EG**

**Robin Hahn, EG**

**Karen Miller, EG**

# Helpful Hints for Identity

The following are some helpful hints to try to insure the right part numbers are given. It is helpful if they know what product they have and approximate purchase date. In the back of this section you will find what was available for places to look for ID labels. Be careful if you think you may be dealing with EG miscellaneous or Studio product. Refer to appropriate sections.

## 1) I NEED A KEY

### **If: Key is “K”**

K= Could be system 6 classic – ask if core is oval or round – If oval be sure to ask for profile letter (SB-K) and number). This is required to check Reff section for available numbers.

K= Could be Reff DOM – ask if

K= Could be Calibre, Reff, Magnusson, Derby, Morrison, Currents, Equity or Dividends – All of these take the same key.

### **If: Key is “E”**

E= Could be system 6 classic – ask if core is oval or round – if oval be sure to ask for profile letter (SB-E ) and number). This is required to check Reff section for available numbers.

E= Could be Calibre if round – if so, key only is not available – must order core and key. See Calibre section 1991-1995.

### **If: Key is “S”**

S= Should be Shaw Walker or Calibre 1991-1995.

### **If: Key is “H”**

H= Could be Equity or Calibre

## 2) I NEED A CORE

### **If: Core is Oval**

This would be System 6 Classic. Be sure to ask if it is for a gang lock, flip lock or hinge lock. These are available in several finishes (see Reff section). You will also want to know what profile. Be sure the Customer is aware of the list price since these are very expensive.

## If: Core is Round

This could just about be any of our products:

Pundra – Reff

DOM – Reff

ESP – All other systems

Equity

- 3) Where can I find an ID label if I don't know what product furniture I have?

See the back of this section for information available about placement of labels.

- 4) In the late 80's early 90's Knoll sold file cabinets that were made for Knoll by a company called All Steel.

Easy identification: **KF-----**

We do not have any inventory and are not able to furnish a reference phone number or contact.

- 5) In the late 80's early 90's Knoll sold the Derby Desk system that was manufactured by a company called Alma Desk. This was prior to production being moved to Toronto.

Easy identification: **S-----**

We do not have any inventory and are not able to furnish a reference phone number or contact.

## EAST GREENVILLE PRODUCT I.D. LABELS

- 1) **Morrison double wide pedestals:** Attached to the underside of the top drawer.
- 2) **Morrison double door cabinets:** Attached to the underside of the top drawer.
- 3) **Morrison Options Overheads:** Attached to the underside of the top.
- 4) **Morrison Kiosks:** Attached to the underside of the top.
- 5) **Cabinets:** Attached to the underside of the far right top drawer or door.
- 6) **Zapf metal overheads:** Attached to the right, inside edge of the front overhang.
- 7) **Stephens Wood Overheads:** Attached to the right outside back.
- 8) **Options Overheads:** Attached to the underside of the top.

MUSKEGON PRODUCT I.D. LABELS

Example:

KNOLL, INC CALIBRE PED

ORDER# 00638184

LINE# 6.001

QTY 1 OF 1

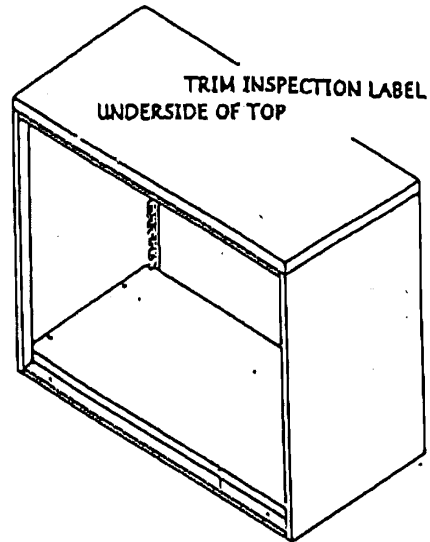
MANU. DATE 06/03/99

PATT# 3C18C07-NK

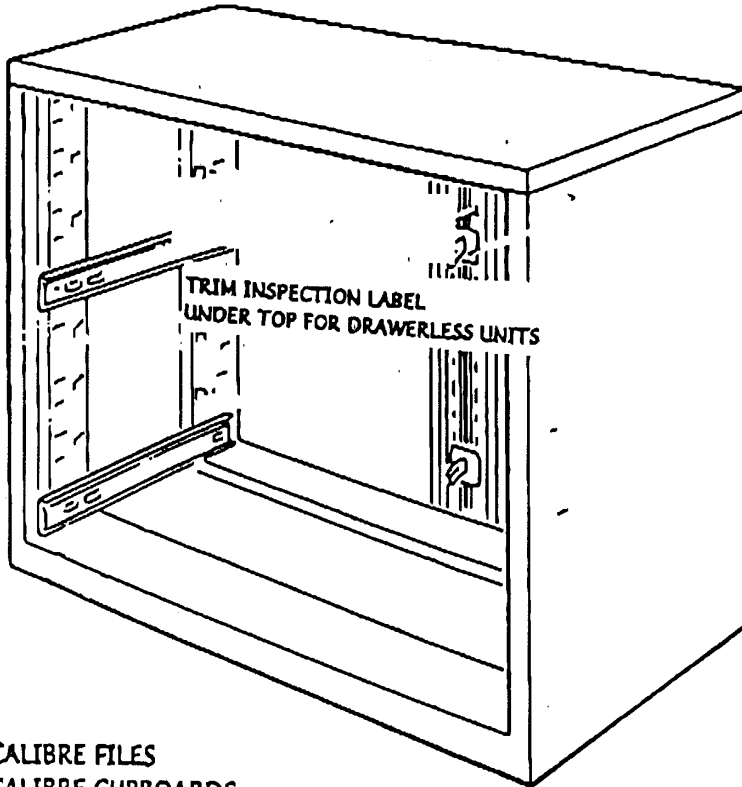
FAB# U

SOLD TO: POWELL GROUP (THE)

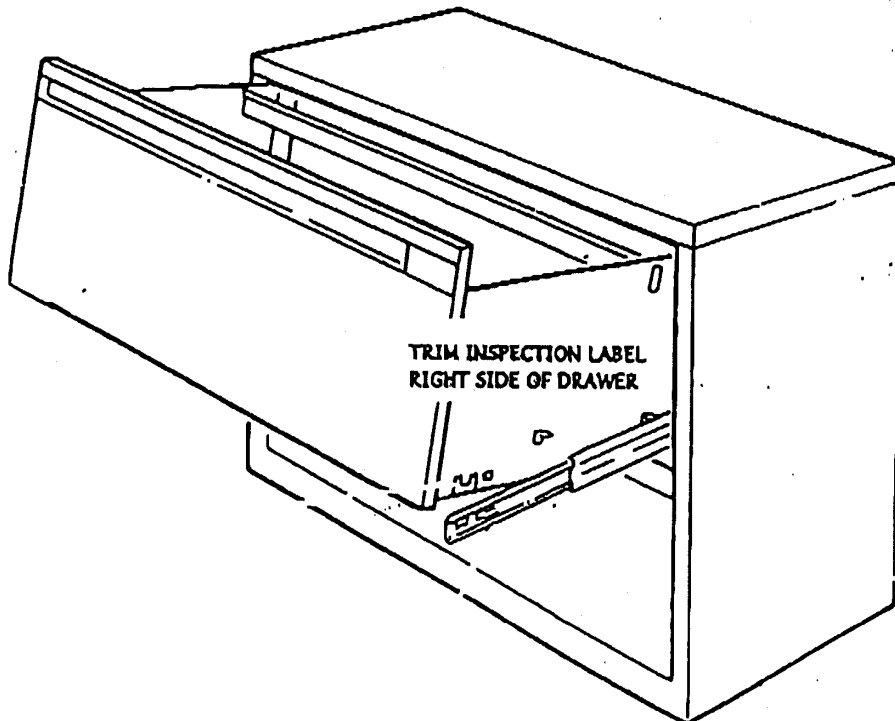
**C**



CALIBRE OVERFILES



CALIBRE FILES  
CALIBRE CUPBOARDS  
CALIBRE BOOKCASES



---

## TORONTO PRODUCT I.D. LABELS

---

### 1. Worksurfaces

- Apply to underneath of worksurface.



- Transaction top: Apply to the bottom side of worksurface at bracketry routing.



### 2. Support Components

- Not applicable.

### 3. Overhead Storages

- For Assembled Overhead: Apply to the back faceboard.



- For KnockDown Overhead: Apply to underneath of U-Shelf. Not applicable on any other wood parts.



### 4. Pedestals & Office Companion

- For B/B/F & F/F: Apply to the interior of file drawer (if its a File/File, it will be applied to the 2<sup>nd</sup> drawer), beside inspection label.





#### 4.0 Peds & Office Companions - continued

- For Open & Hinged Door(s): Apply to the right hand side underneath of the adjustable shelf, beside inspection label.



- Office Companion: Apply to the right hand side underneath of compartment shelf.



## 5. Cabinets & Office Towers

- F/F/F, F/F/F/F, HD+B/B/F, HD+F/F, HD+F/F/F/F: Apply to the interior of File drawer, beside inspection label.



- Open Bookcase, Open+HD below, Wardrobe HD+Shelves, Audio Visual with 2 sets of HD+2 pull out shelves: Apply to underneath right hand side of bottom adjustable shelf, beside inspection label.



- Wardrobe Hinged Door(s) without Shelf: Apply to the right hand gable, below the bottom hinge, beside inspection label.



## 5. Cabinets & Office Towers - continued

- Office Tower: Apply to the interior of bottom File, beside inspection label.



**Calibre  
Files/Peds  
5/19/00- Present**

- **Morrison/Reff**

Mfg ESP

Changed to Universal Core-Key System  
See section 2 -Universal  
Universal style –  
C in 4<sup>th</sup> position of Pattern number

- Standard Number Range

-K001 – K250

\*Reff also has a K profile-be sure K core in question is round

- Special Number Range

-K500+

\*Must be special ordered through Custom Product Development

- Special Series

-A,B,C,D,F P/N Example: ASPECB1Q

\*These are generally used for specific clients IE-IBM where keying unlike other Clients is required – Key way (slot), mechanism and machining is different

A - single cut key

I - double cut key

\*See Special Series Matrix

## **Equity**

Mfg Hudson

**Changed to Universal Core-Key system**

See section 2

Universal style -

C in 4<sup>th</sup> position of Pattern number

**\*\* Still available with the Equity H style core/key**

A in 4<sup>th</sup> position of Pattern number

-Key –

Single Bit – Number stamped on Key

Number sequence – H6001 – H6050

-Core –

Number stamped on core

Installation Key – YES

H6RK stamped on installation key

-Housing –

Flip Door – Brass  
Drawer-Brass

**Calibre – Files**  
**3/95-5/19/00**

- Pre Universal System

Could be keyed to:

Equity –

Mfg Hudson

A in 4<sup>th</sup> position of Pattern number  
A = H series keys

-Key –

Single Bit – Number stamped on Key  
Number sequence – H001 – H6250

-Core –

Number stamped on core  
Installation key – YES  
H6RK stamped on installation key

-Housing –

-Drawer – Black  
-Flip Door – Chrome

Morrison – Reff

Mfg - ESP

C in 4<sup>th</sup> position of Pattern number  
C = K series keys

-Key –

Single Bit – Number stamped on Key  
Number sequence – K001 – K250

-Core – Black

Number stamped on core  
Installation Key – YES  
CK2511 stamped on installation key

-Housing – Chrome

**\* Key is the same as standard Morrison/Reff product – however the core is different \***

## Calibre – Files 1991-1995

- Introduced in 1991

Could be keyed to:

Equity –

Mfg Hudson

A in 4<sup>th</sup> position of Pattern number  
A = H series keys

-Key –

Single Bit – Number stamped on Key  
Number sequence – H001 – H6250

-Core –

Number stamped on core  
Installation key – YES  
H6RK stamped on installation key

-Housing –

-Drawer – Black  
-Flip Door – Chrome

Shaw Walker/Calibre –

Mfg National Lock

B in 4<sup>th</sup> position of Pattern number  
B = S series keys

-Key –

Double Bit – Number stamped on Key  
Number sequence – S11 – S50

-Core –

Number stamped on core  
Installation Key – YES  
S stamped on installation key

-Housing – Black

Morrison-

Mfg ESP

C in 4<sup>th</sup> position of Pattern number  
C = K series keys

- Key –  
Single Bit – Number stamped on Key  
Number sequence – K001 – K250
- Core – Black  
Number stamped on core  
Installation Key – YES  
CK2511 stamped on installation key
- Housing – Chrome

Reff –

National Lock

D in 4<sup>th</sup> position of Pattern number  
D = E series keys

- Key –  
Double Bit – Number stamped on Key  
Number Sequence – E1 – E50
- Core –  
Number stamped on core  
Installation Key – YES  
M500 Stamped on installation key
- Housing – Black

**\* In 1995 B, C, D all became K series core/keys, however the core was different from the standard Reff and Morrison product.**

**The keys were interchangeable.**



**CALIBRE REPLACEMENT LOCK MATRIX  
(5/19/00 TO PRESENT)**

<b>PRODUCT</b>	<b>SHIP DATE CHANGED TO UNIVERSAL</b>	<b>CORE NEEDED (PICTURE PAGE#1,20,23)</b>	<b>CUT KEY ONLY (PICTURE PAGE#3,4)</b>	<b>KEY BLANKS (PICTURE PAGE#5,6)</b>	<b>CHANGE KEY (PICTURE PAGE#7,8)</b>	<b>MASTER KEY (PICTURE PAGE#9,10)</b>
Pedestal (K Keyed)	5/19/00	HLKRKRAN	HLKRKKEY	HLKRKBLANK	HLKRKCHANGE	HLKRKMASTER
Pedestal (H Keyed)	5/19/00	HLKR5ZNA(A/C)RAN	HLKRALCKEHKEY	HLKRALCKEHKEY*	HLKRAKC	HLKRAKM
Doublewide Ped (K Keyed)	5/19/00	HLKRKRAN	HLKRKKEY	HLKRKBLANK	HLKRKCHANGE	HLKRKMASTER
Doublewide Ped (H Keyed)	5/19/00	HLKR5ZNA(A/C)RAN	HLKRALCKEHKEY	HLKRALCKEHKEY*	HLKRAKC	HLKRAKM
Hybrid/Files w/Drawers(K Key)	5/19/00	HLKRKRAN	HLKRKKEY	HLKRKBLANK	HLKRKCHANGE	HLKRKMASTER
Hybrid/Files w/Drawers(H Key)	5/19/00	HLKR5ZNA(A/C)RAN	HLKRALCKEHKEY	HLKRALCKEHKEY*	HLKRAKC	HLKRAKM
Hybrid/Files w/Flipper (K Key)	5/19/00	HLKRKRAN	HLKRKKEY	HLKRKBLANK	HLKRKCHANGE	HLKRKMASTER
Hybrid/Files w/Flipper (H Key)	5/19/00	HLKR5ZNA(A/C)RAN	HLKRALCKEHKEY	HLKRALCKEHKEY*	HLKRAKC	HLKRAKM
Overfile (K Keyed)	5/19/00	HLKRKRAN	HLKRKKEY	HLKRKBLANK	HLKRKCHANGE	HLKRKMASTER
Overfile (H Keyed)	5/19/00	HLKR5ZNA(A/C)RAN	HLKRALCKEHKEY	HLKRALCKEHKEY*	HLKRAKC	HLKRAKM
Overdesk (K Keyed)	5/19/00	HLKRKRAN	HLKRKKEY	HLKRKBLANK	HLKRKCHANGE	HLKRKMASTER
Overdesk (H Keyed)	5/19/00	NOT APPLICABLE	NOT APPLICABLE	NOT APPLICABLE	NOT APPLICABLE	NOT APPLICABLE
Wardrobes (K Keyed)	5/19/00	HLKRKRAN	HLKRKKEY	HLKRKBLANK	HLKRKCHANGE	HLKRKMASTER
Wardrobes (H Keyed)	5/19/00	HLKR5ZNA(A/C)RAN	HLKRALCKEHKEY	HLKRALCKEHKEY*	HLKRAKC	HLKRAKM

\*When ordering, place the notation "BLANK" in the description.

**CALIBRE REPLACEMENT HOUSING MATRIX  
(5/19/00 TO PRESENT)**

PRODUCT	SHIP DATE CHANGED TO UNIVERSAL	UNIVERSAL HOUSING PART NUMBER	PICTURE PAGE NUMBER
Pedestal (K Keyed)	5/19/00	KR1C69286G01	11
Pedestal (H Keyed)	5/19/00	KR1C69286G03	12
Doublewide Ped (K Keyed)	5/19/00	KR1C69286G01	11
Doublewide Ped (H Keyed)	5/19/00	KR1C69286G03	12
Hybrid/Files w/Drawers (K Key)	5/19/00	KR1C69284H01	15
Hybrid/Files w/Drawers (H Key)	5/19/00	KR1C69284H03	16
Hybrid/Files w/Flipper (K Key)	5/19/00	KR1C69285G01	17
Hybrid/Files w/Flipper (H Key)	5/19/00	KR1C69285G03	18
Overfile (K Keyed)	5/19/00	KR6D07110H01	19
Overfile (H Keyed)	5/19/00	HLKR5ZNAARAN*	20
Overdesk (K Keyed)	5/19/00	KR6D07109H01**	21
Overdesk (H Keyed)	5/19/00	NOT APPLICABLE	NOT APPLICABLE
Wardrobes (K Keyed)	5/19/00	KR1C69284H01	15
Wardrobes (H Keyed)	5/19/00	KR1C69284H03	16

\*Customer will receive 1 Housing, Core and Key when this is ordered.

\*\* This part# is valid for product purchased from 5/19/00 to 11/00. Any products purchased from 11/00 to present should use part# KR7727C12G02.

**CALIBRE REPLACEMENT LOCK MATRIX  
(3/95 TO 5/19/00)**

<b>PRODUCT</b>	<b>SHIP DATE CHANGED TO UNIVERSAL</b>	<b>CORE NEEDED (PICTURE PAGE#22,23,24,25)</b>	<b>CUT KEY ONLY (PICTURE PAGE# 3,4)</b>	<b>KEY BLANKS (PICTURE PAGE#5,6)</b>	<b>CHANGE KEY (PICTURE PAGE#7,8)</b>	<b>MASTER KEY (PICTURE PAGE#9,10)</b>
Pedestal (K Keyed)	5/19/00	HLKR5ZNCCRAN	HLKRKKEY	HLKRKBLANK	HLKRKCHANGE	HLKRKMASTER
Pedestal (H Keyed)	5/19/00	HLKR5ZNACRAN	HLKRALCKEHKEY	HLKRALCKEHKEY*	HLKRAKC	HLKRAKM
Doublewide Ped (K Keyed)	5/19/00	NOT APPLICABLE	NOT APPLICABLE	HLKRKBLANK	NOT APPLICABLE	NOT APPLICABLE
Doublewide Ped (H Keyed)	5/19/00	NOT APPLICABLE	NOT APPLICABLE	HLKRALCKEHKEY*	NOT APPLICABLE	NOT APPLICABLE
Hybrid/Files w/Drawers(K Key)	5/19/00	HLKR5ZNCCRAN	HLKRKKEY	HLKRKBLANK	HLKRKCHANGE	HLKRKMASTER
Hybrid/Files w/Drawers(H Key)	5/19/00	HLKR5ZNACRAN	HLKRALCKEHKEY	HLKRALCKEHKEY*	HLKRAKC	HLKRAKM
Hybrid/Files w/Flipper (K Key)	5/19/00	HLKR5ZNCCRAN	HLKRKKEY	HLKRKBLANK	HLKRKCHANGE	HLKRKMASTER
Hybrid/Files w/Flipper (H Key)	5/19/00	HLKR5ZNACRAN	HLKRALCKEHKEY	HLKRALCKEHKEY*	HLKRAKC	HLKRAKM
Overfile (K Keyed)	5/19/00	HLKR5ZNCARAN	HLKRKKEY	HLKRKBLANK	HLKRKCHANGE	HLKRKMASTER
Overfile (H Keyed)	5/19/00	HLKR5ZNAARAN	HLKRALCKEHKEY	HLKRALCKEHKEY*	HLKRAKC	HLKRAKM
Overdesk (K Keyed)	5/19/00	HLKR5ZNCCRAN	HLKRKKEY	HLKRKBLANK	HLKRKCHANGE	HLKRKMASTER
Overdesk (H Keyed)	5/19/00	NOT APPLICABLE	NOT APPLICABLE	NOT APPLICABLE	NOT APPLICABLE	NOT APPLICABLE
Wardrobes (K Keyed)	5/19/00	HLKR5ZNCCRAN	HLKRKKEY	HLKRKBLANK	HLKRKCHANGE	HLKRKMASTER
Wardrobes (H Keyed)	5/19/00	HLKR5ZNACRAN	HLKRALCKEHKEY	HLKRALCKEHKEY*	HLKRAKC	HLKRAKM

**\*When ordering place the notation "BLANK" in the description.**

**CALIBRE REPLACEMENT HOUSING MATRIX  
(3/95 TO 5/19/00)**

PRODUCT	SHIP DATE CHANGED TO UNIVERSAL	OLD STYLE HOUSING PART NUMBER	PICTURE PAGE NUMBER
Pedestal (K Keyed)	5/19/00	HLKR1C69017G03	26
Pedestal (H Keyed)	5/19/00	HLKR1C69017G02	27
Doublewide Ped (K Keyed)	5/19/00	NOT APPLICABLE	NOT APPLICABLE
Doublewide Ped (H Keyed)	5/19/00	NOT APPLICABLE	NOT APPLICABLE
Hybrid/Files w/Drawers (K Key)	5/19/00	HLKR1379594	28
Hybrid/Files w/Drawers (H Key)	5/19/00	HLKR1379581	29
Hybrid/Files w/Flipper (K Key)	5/19/00	HLKR1C69026G02	30
Hybrid/Files w/Flipper (H Key)	5/19/00	HLKR1C69026G01	31
Overfile (K Keyed)	5/19/00	HLKR5ZNCARAN*	24
Overfile (H Keyed)	5/19/00	HLKR5ZNAARAN*	25
Overdesk (K Keyed)	5/19/00	HLKR7662C52H01	32
Overdesk (H Keyed)	5/19/00	NOT APPLICABLE	NOT APPLICABLE
Wardrobes (K Keyed)	5/19/00	HLKR1379594	28
Wardrobes (H Keyed)	5/19/00	HLKR1379581	29

\*Customer will receive 1 Housing, Core and Key when this is ordered.

**CALIBRE REPLACEMENT LOCK MATRIX  
(1991 TO 3/95)**

<b>SHAW WALKER</b>	<b>CORE NEEDED (PICTURE PAGE#33)</b>	<b>CUT KEY ONLY (PICTURE PAGE#34)</b>	<b>KEY BLANKS (PICTURE PAGE#35)</b>	<b>CHANGE KEY (PICTURE PAGE#36)</b>	<b>MASTER KEY (PICTURE PAGE#37)</b>
Files	HLKR5ZNBC	HLKR5ZNBC	HLKR5ZNBC	HLKR5ZNBC	HLKR5ZNBC
Cabinets	HLKR5ZNBC	HLKR5ZNBC	HLKR5ZNBC	HLKR5ZNBC	HLKR5ZNBC
Wardrobes	HLKR5ZNBC	HLKR5ZNBC	HLKR5ZNBC	HLKR5ZNBC	HLKR5ZNBC

<b>EQUITY</b>	<b>CORE NEEDED (PICTURE PAGE#23)</b>	<b>CUT KEY ONLY (PICTURE PAGE#4)</b>	<b>KEY BLANKS (PICTURE PAGE#6)</b>	<b>CHANGE KEY (PICTURE PAGE#8)</b>	<b>MASTER KEY (PICTURE PAGE#10)</b>
Files	HLKR5ZNACRAN	HLKR5ZNACRAN	HLKR5ZNACRAN*	HLKR5ZNACRAN	HLKR5ZNACRAN
Cabinets	HLKR5ZNACRAN	HLKR5ZNACRAN	HLKR5ZNACRAN*	HLKR5ZNACRAN	HLKR5ZNACRAN
Wardrobes	HLKR5ZNACRAN	HLKR5ZNACRAN	HLKR5ZNACRAN*	HLKR5ZNACRAN	HLKR5ZNACRAN

<b>MORRISON</b>	<b>CORE NEEDED (PICTURE PAGE#1)</b>	<b>CUT KEY ONLY (PICTURE PAGE#3)</b>	<b>KEY BLANKS (PICTURE PAGE#5)</b>	<b>CHANGE KEY (PICTURE PAGE#7)</b>	<b>MASTER KEY (PICTURE PAGE#9)</b>
Files	HLKR5ZNCCCRAN	HLKR5ZNCCCRAN	HLKR5ZNCCCRAN	HLKR5ZNCCCRAN	HLKR5ZNCCCRAN
Cabinets	HLKR5ZNCCCRAN	HLKR5ZNCCCRAN	HLKR5ZNCCCRAN	HLKR5ZNCCCRAN	HLKR5ZNCCCRAN
Wardrobes	HLKR5ZNCCCRAN	HLKR5ZNCCCRAN	HLKR5ZNCCCRAN	HLKR5ZNCCCRAN	HLKR5ZNCCCRAN

<b>REFF</b>	<b>CORE NEEDED (PICTURE PAGE#38)</b>	<b>CUT KEY ONLY</b>	<b>KEY BLANKS</b>	<b>CHANGE KEY (PICTURE PAGE#39)</b>	<b>MASTER KEY (PICTURE PAGE#40)</b>
Files	HLKR5ZNDC	NOT AVAILABLE	NOT AVAILABLE	HLKR5ZNDC	HLKR5ZNDC
Cabinets	HLKR5ZNDC	NOT AVAILABLE	NOT AVAILABLE	HLKR5ZNDC	HLKR5ZNDC
Wardrobes	HLKR5ZNDC	NOT AVAILABLE	NOT AVAILABLE	HLKR5ZNDC	HLKR5ZNDC

\*When ordering place the notation "BLANK" in the description.

**CALIBRE REPLACEMENT HOUSING MATRIX  
(1991 TO 3/95)**

SHAW WALKER	OLD STYLE HOUSING PART NUMBER	PICTURE PAGE NUMBER
Files	HLKR1379578	41
Cabinets	HLKR1379578	41
Wardrobes	HLKR1379578	41

EQUITY	OLD STYLE HOUSING PART NUMBER	PICTURE PAGE NUMBER
Files	HLKR1379581	29
Cabinets	HLKR1379581	29
Wardrobes	HLKR1379581	29

MORRISON	OLD STYLE HOUSING PART NUMBER	PICTURE PAGE NUMBER
Files	HLKR1379594	28
Cabinets	HLKR1379594	28
Wardrobes	HLKR1379594	28

REFF	OLD STYLE HOUSING PART NUMBER	PICTURE PAGE NUMBER
Files	HLKR1379578	41
Cabinets	HLKR1379578	41
Wardrobes	HLKR1379578	41

**SPECIAL SERIES REPLACEMENT CORE MATRIX  
(APPLIES TO ALL SYSTEMS FURNITURE EXCEPT CALIBRE FILES WHERE NOTED)**

**OLD STYLE CORE (PRIOR TO 5/1/00)**

KRCORE(A/B/C/D)SPECQ  
KRCORE(I)SPECQ

**NEW STYLE CORE (POST 5/1/00)**

(A/B/C/D)SPEC(\*)Q = No Charge  
(I)SPEC(\*)Q = Billable

**CUT KEY**

KR6200200(A/B/C/D)MQ  
KR6200200(I)MQ

**KEY BLANKS**

HLKR(A/B/C/D)BLANKQ  
HLKR(I)BLANKQ

**CHANGE KEY**

HLKR6200400Q(FITS A/B/C/D)  
HLKR6200400(I)Q

**MASTER KEYS (HOTLINE)**

HLKR6200300Q (FITS A/B/C/D)  
HLKR6200300(I)Q

**MASTER KEYS (STD. ORDER ENTRY)**

(A/B/C/D)MASTERQ  
(I)MASTERQ

\*Same order procedure applies as the Universal Lock Policy. This ( ) equals the quantity for a specific key number.

**CALIBRE FILES CORE & KEY**

**PRIOR TO 7/1/00 (THIN FACE)**

KRCORE(A/B/C/D)SPECQC  
KRCORE (I)SPECQC

**POST 7/1/00 (STANDARD FACE)**

(A/B/C/D)SPEC(\*)QC = No Charge  
(I)SPEC(\*)QC = No Charge  
(A/B/C/D)SPECB(\*)QC = No Charge  
(I)SPECB(\*)QC = No Charge

\*Same order procedure applies as the Universal Lock Policy. This ( ) equals the quantity for a specific key number.

\*\*Available key numbers are: A/B/C/D = 1-250 & 501-565  
I = 1-500

\*\*\*Keys are stamped as follows: Cut Key = Stamped with Key#  
Key Blank = No Stamping  
Change = KCK505  
Master = KMK505

**CALIBRE CORE AND KEY  
HLKRKRAN**





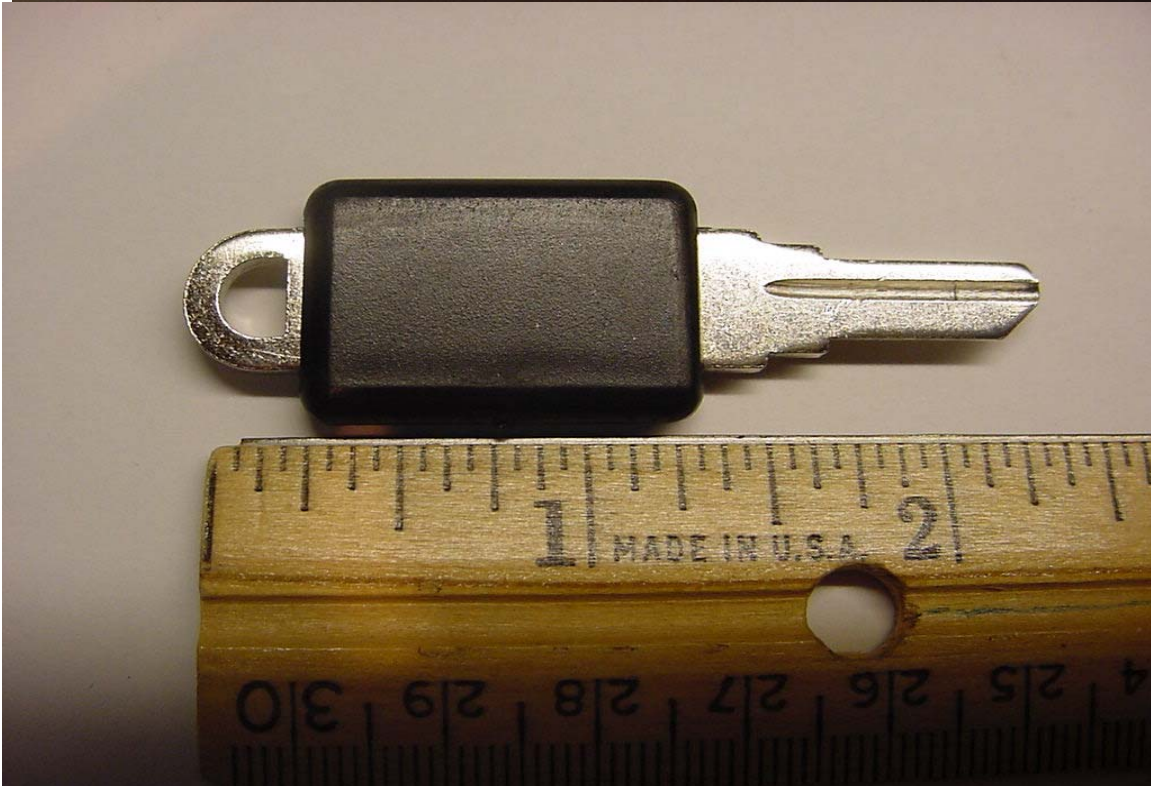
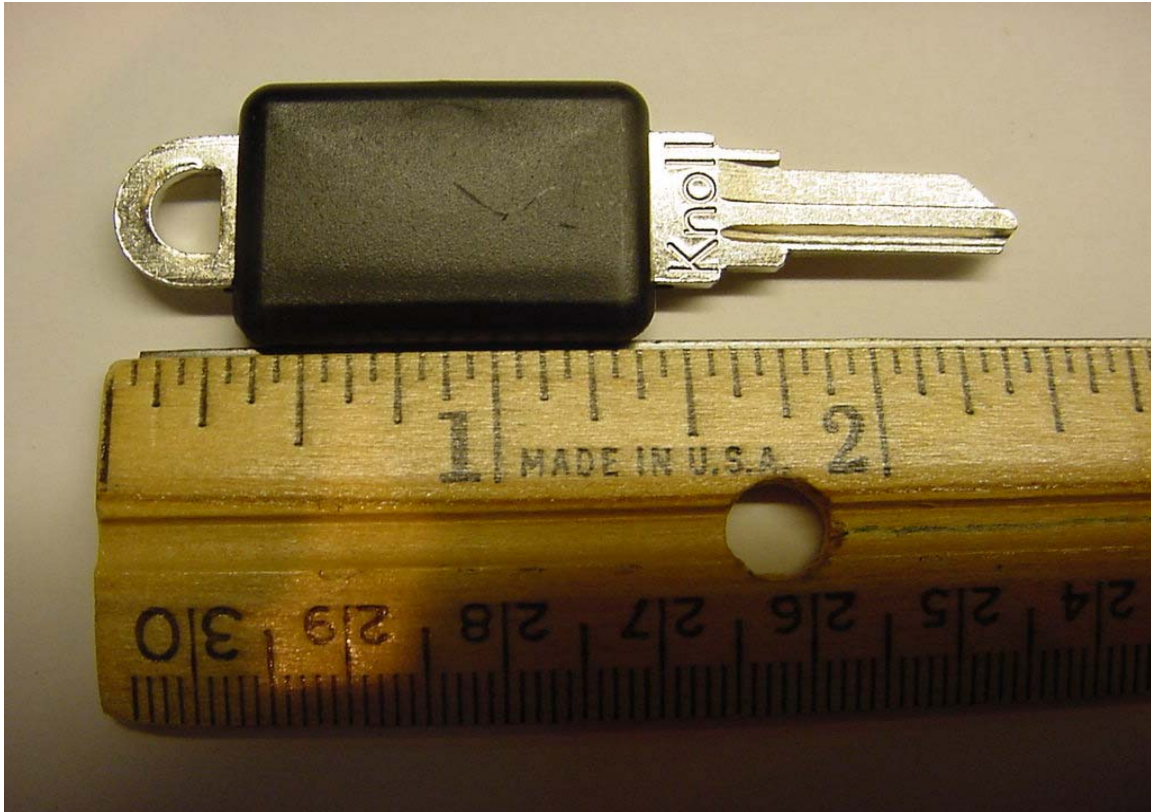
**CALIBRE KEY "K"  
HLKRRKEY**



**CALIBRE KEY "H"  
HLKRALCKEHKEY**



**CALIBRE KEY BLANK "K"  
HLKRRKBLANK**



**CALIBRE KEY BLANK "H"  
HLKRALCKEKEY\***



**CALIBRE CHANGE KEY "K"  
HLKRKCHANGE**



**CALIBRE CHANGE KEY "H"  
HLKRAKC**



**CALIBRE MASTER KEY "K"  
HLKRKMASTER**

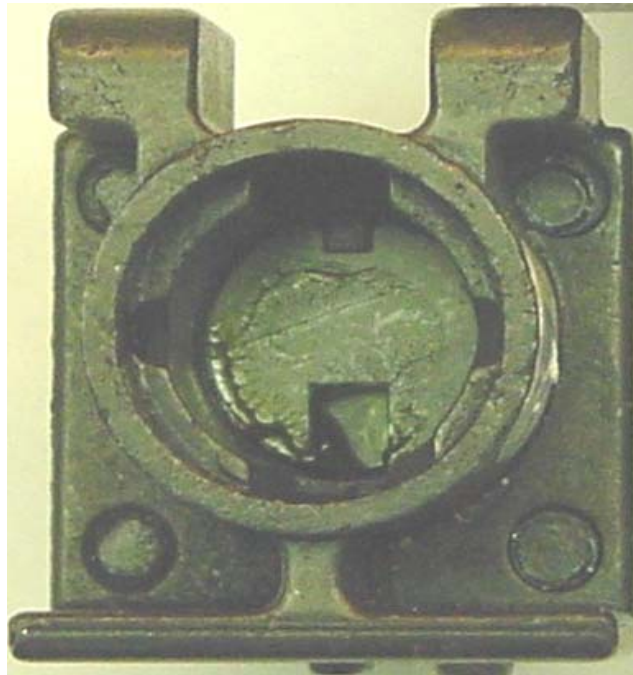
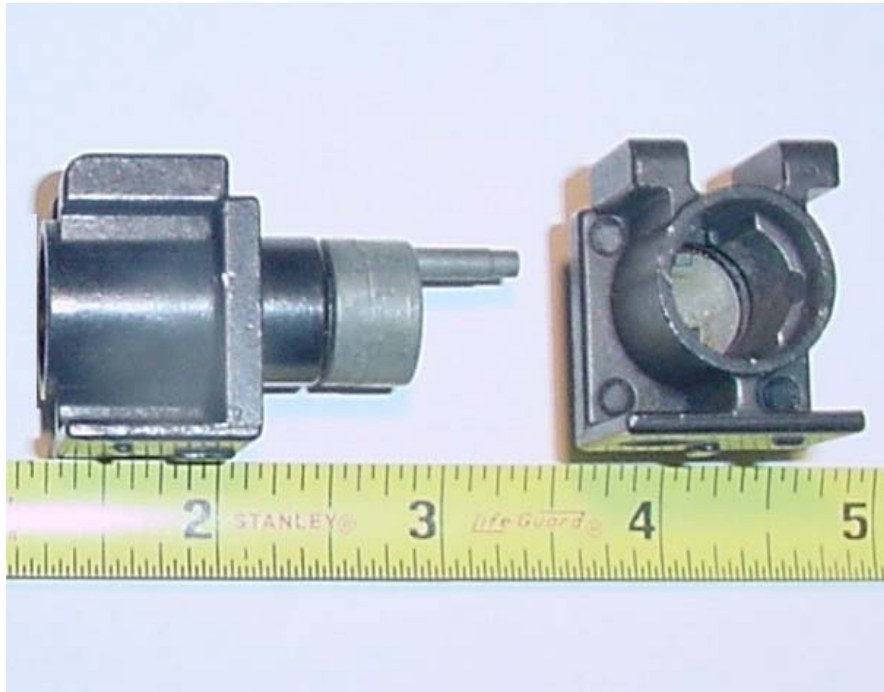


**CALIBRE MASTER KEY "H"  
HLKRAKM**

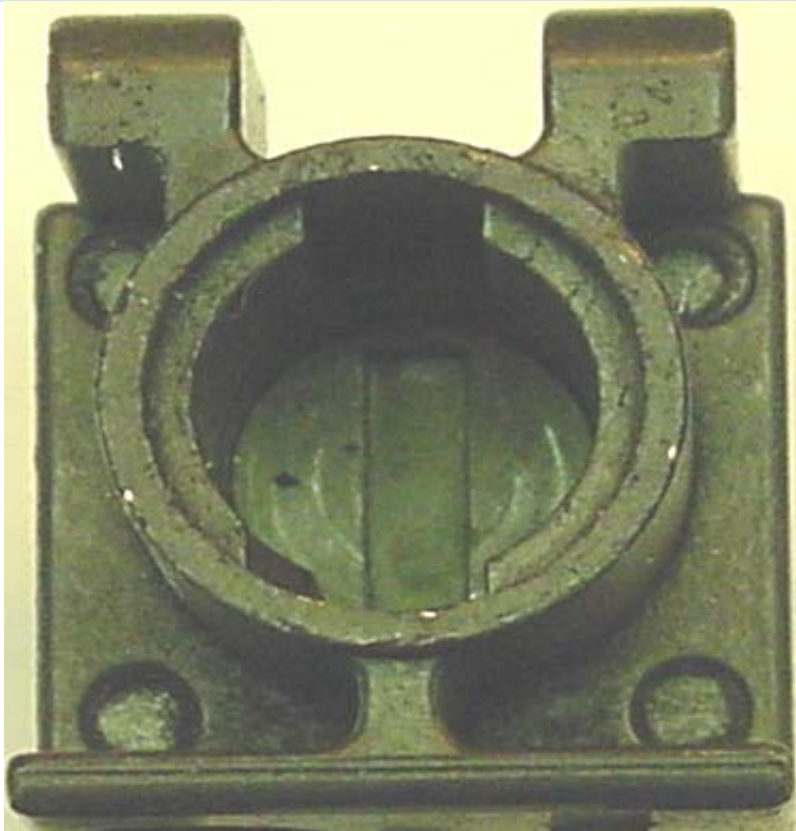
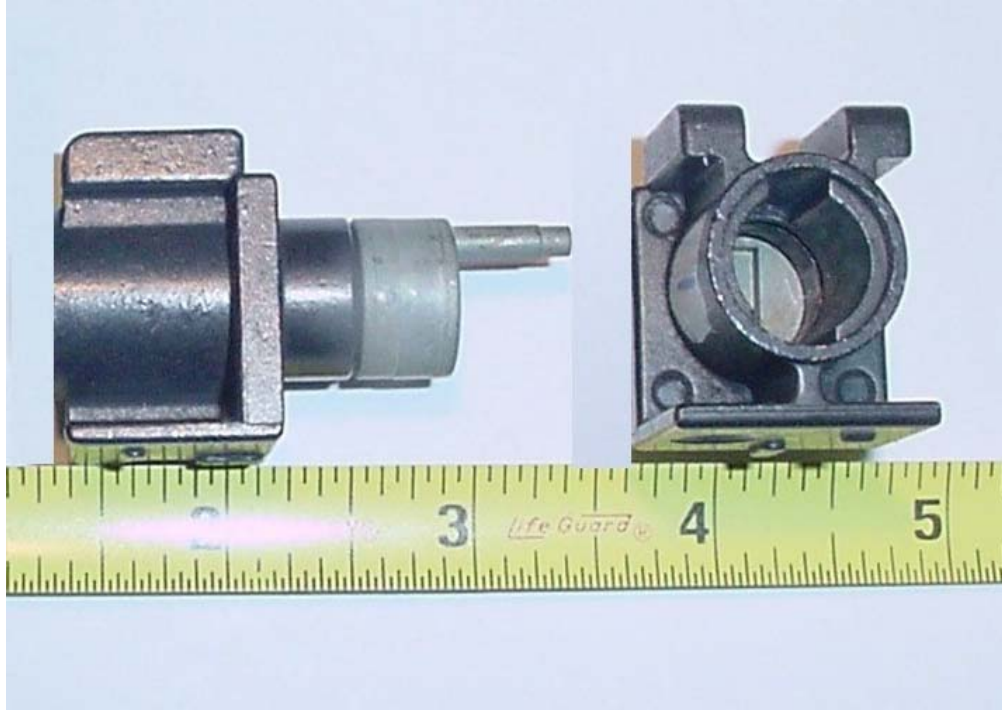




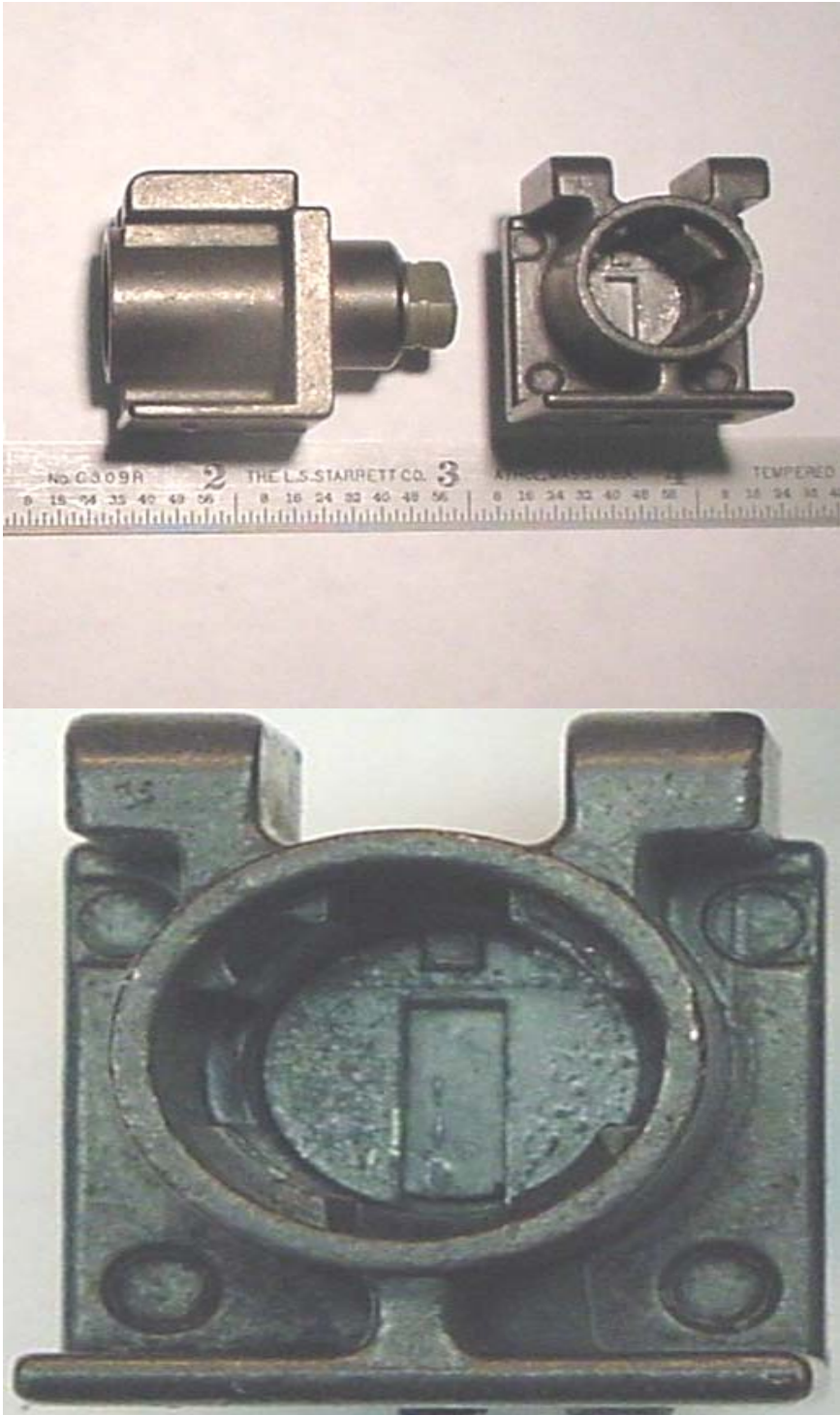
**CALIBRE, DIVIDENDS PEDESTAL AND  
DOUBLEWIDE "K" HOUSING  
KR1C69286G01**



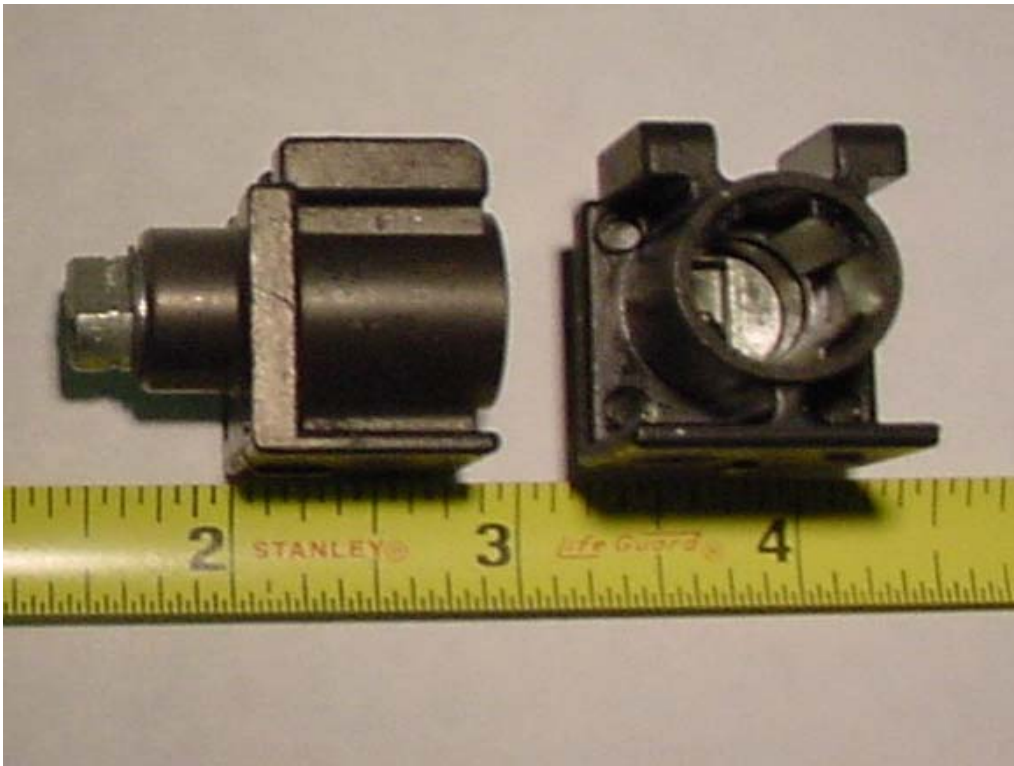
**CALIBRE PEDESTAL AND CALIBRE DOUBLEWIDE  
“H” HOUSING  
KR1C69286G03**



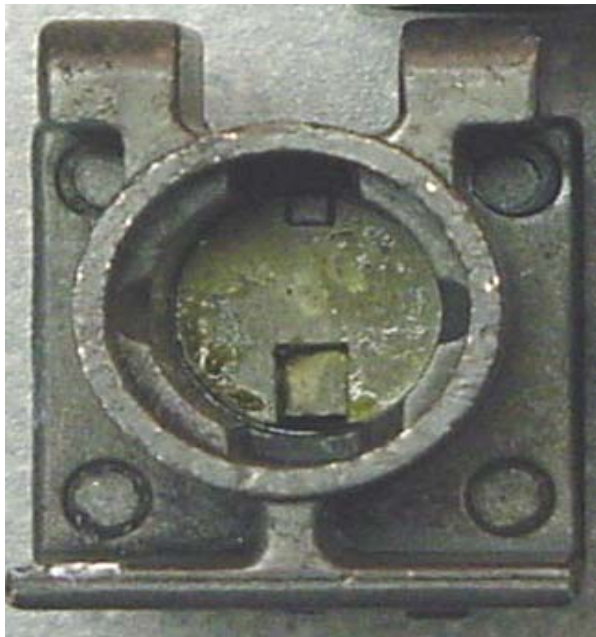
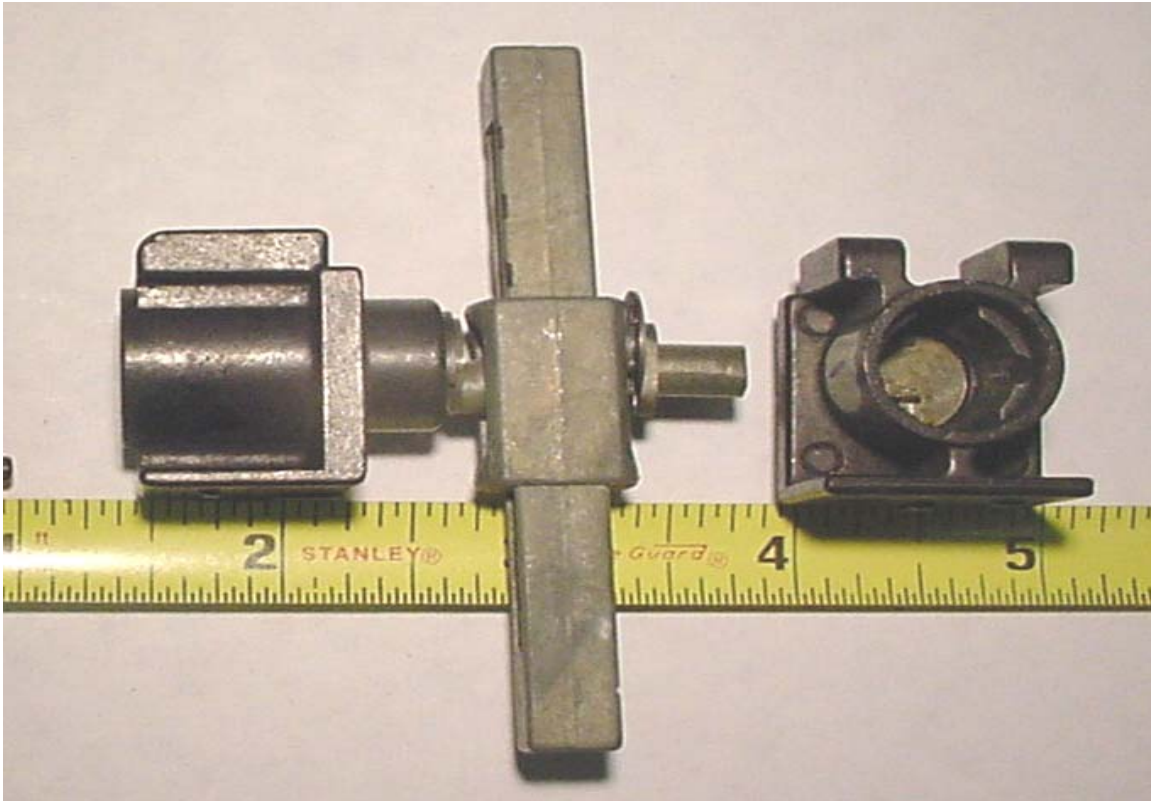
**CALIBRE HOUSING "K" FOR FILES W/ DRAWERS AND  
WARDROBES  
KR1C69284H01**



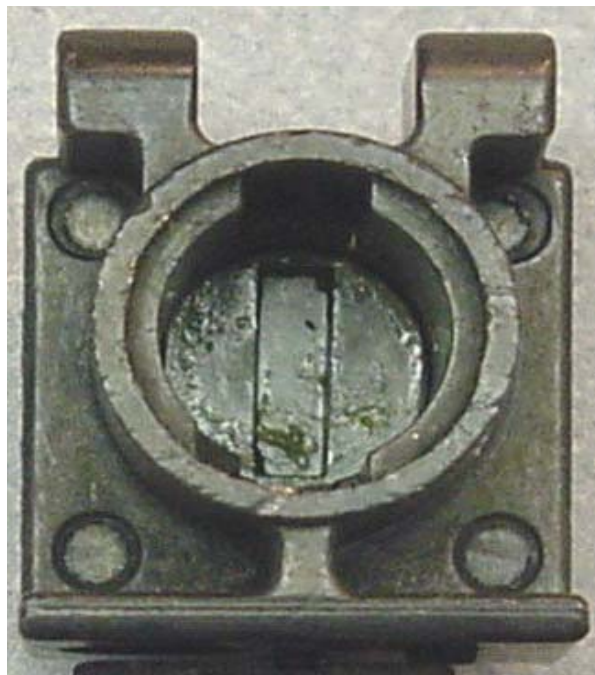
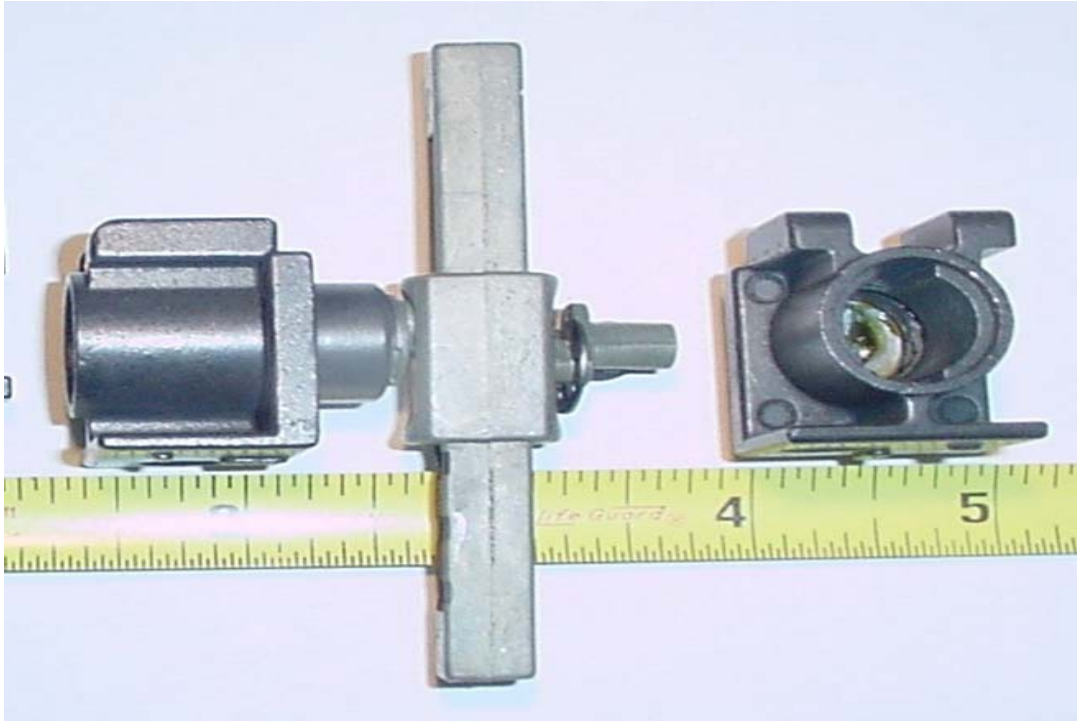
**CALIBRE FILE W/DRAWERS AND WARDROBE  
“H” HOUSING  
KR1C69284H03**



**CALIBRE FLIPPER DOOR  
"K" HOUSING  
KR1C69285G01**



**CALIBRE FLIPPER DOOR  
“H” HOUSING  
KR1C69285G03**



**CALIBRE OVERFILE HOUSING "K" CORE  
KR6D07110H01**



**CALIBRE HOUSING FOR "H" OVERFILE  
HLKR5ZNAARAN**

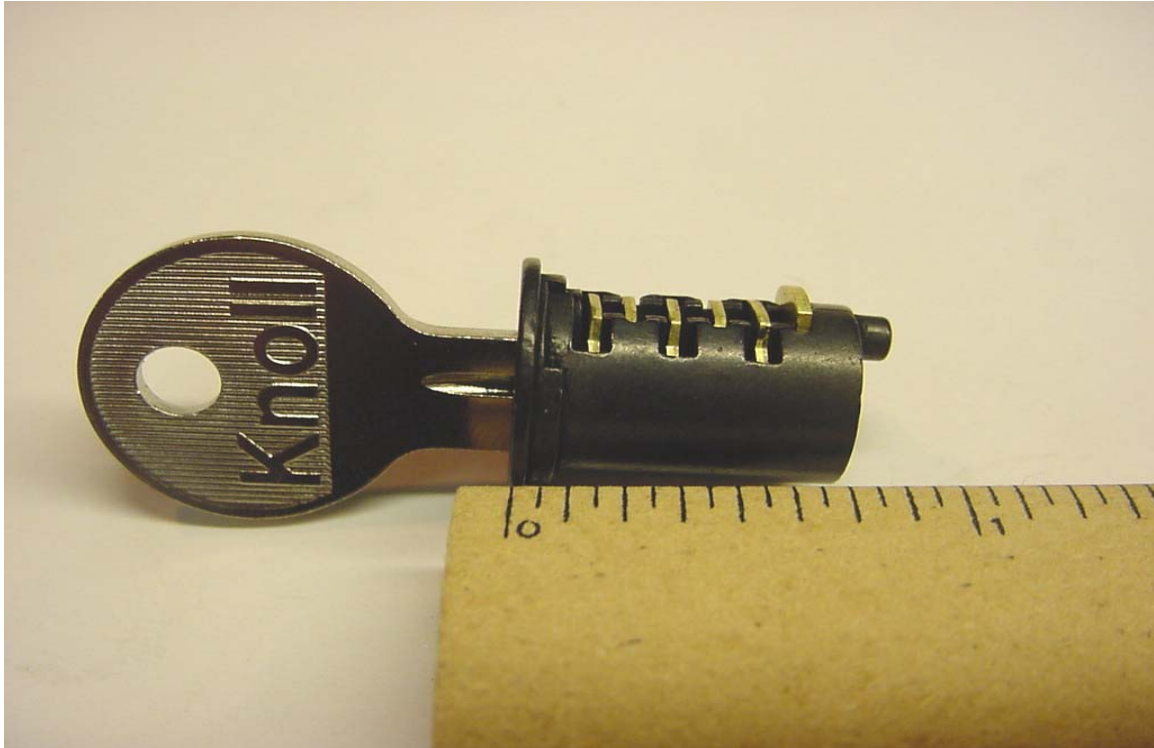




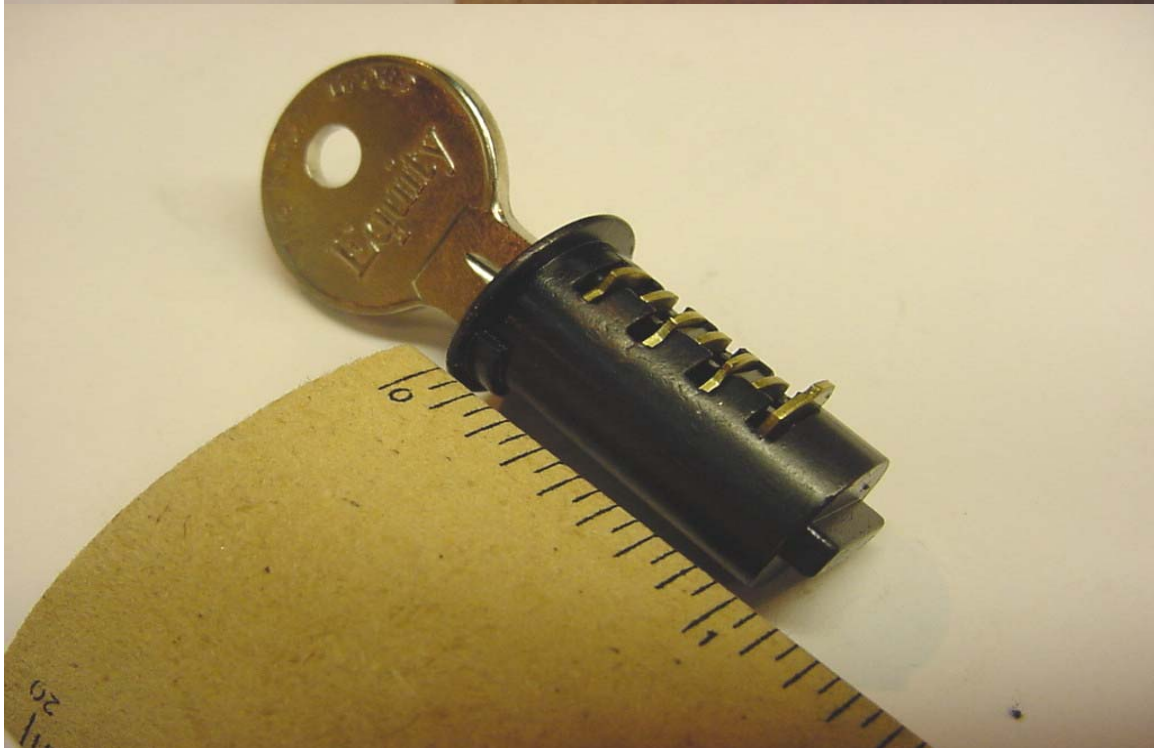
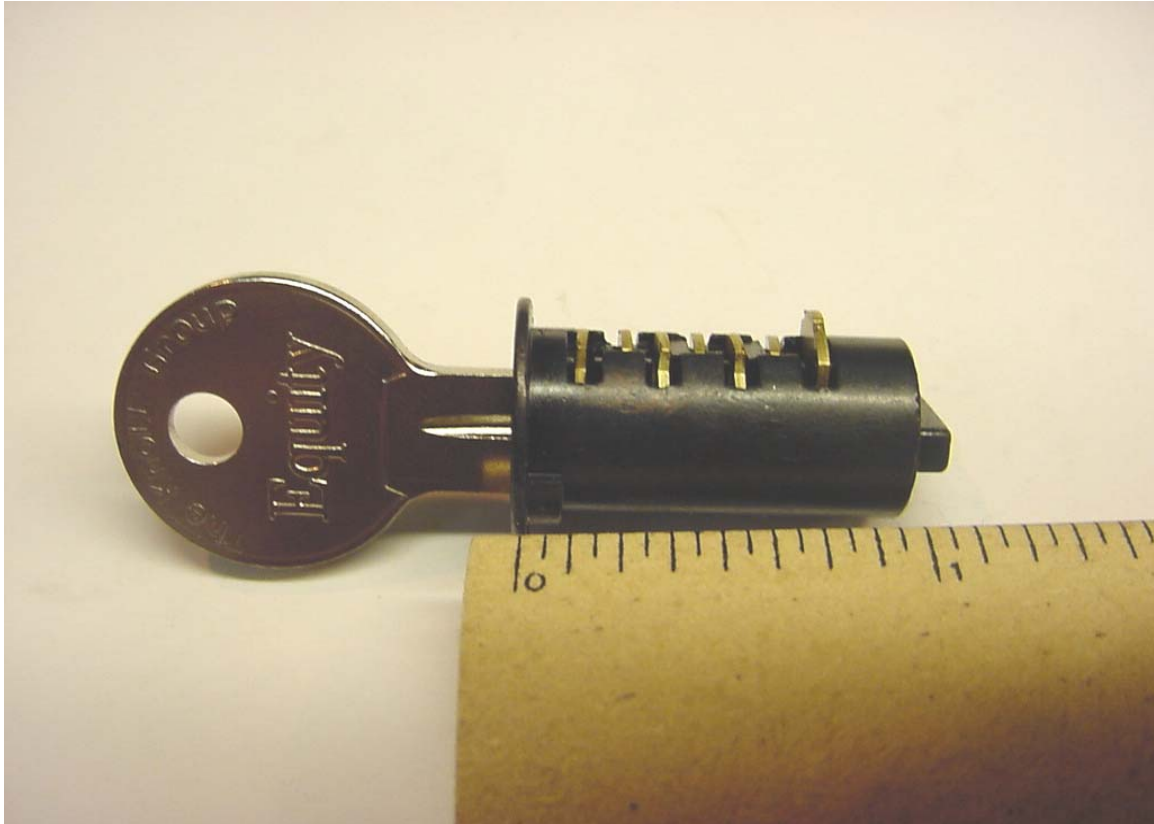
**CALIBRE OVERDESK UNIT "K" CORE  
KR6D07109H01**



**CALIBRE CORE FOR "K" PEDESTALS, FILES WITH  
DRAWERS AND FLIPPER, OVERFILE AND OVERDESK  
HLKR5ZNCGRAN**



**CALIBRE CORE "H" FOR PEDESTALS, FILES WITH  
DRAWER AND FLIPPER, OVERFILE AND OVERDESK  
HLKR5ZNACRAN**



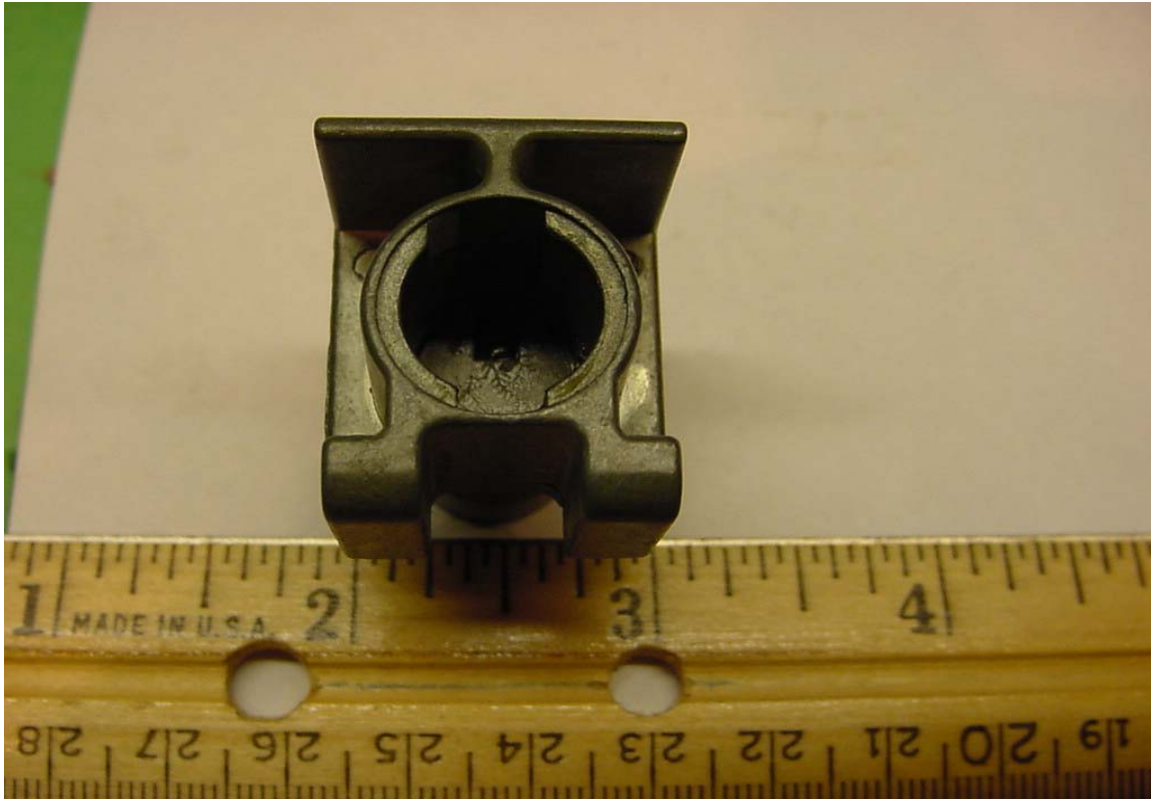
**CALIBRE CORE AND HOUSING FOR A "K" OVERFILE  
HLKR5ZNCARAN**



**CALIBRE CORE AND HOUSING FOR "H" OVERFILE  
HLKR5ZNAARAN**



**CALIBRE HOUSING FOR A "K" CORE PEDESTAL  
HLKR1C69017G03**



**CALIBRE HOUSING FOR A "H" CORE PEDESTAL  
HLKR1C69017G02**



**CALIBRE HOUSING FOR "K" FILES WITH DRAWERS AND  
WARDROBE  
HLKR1379594**





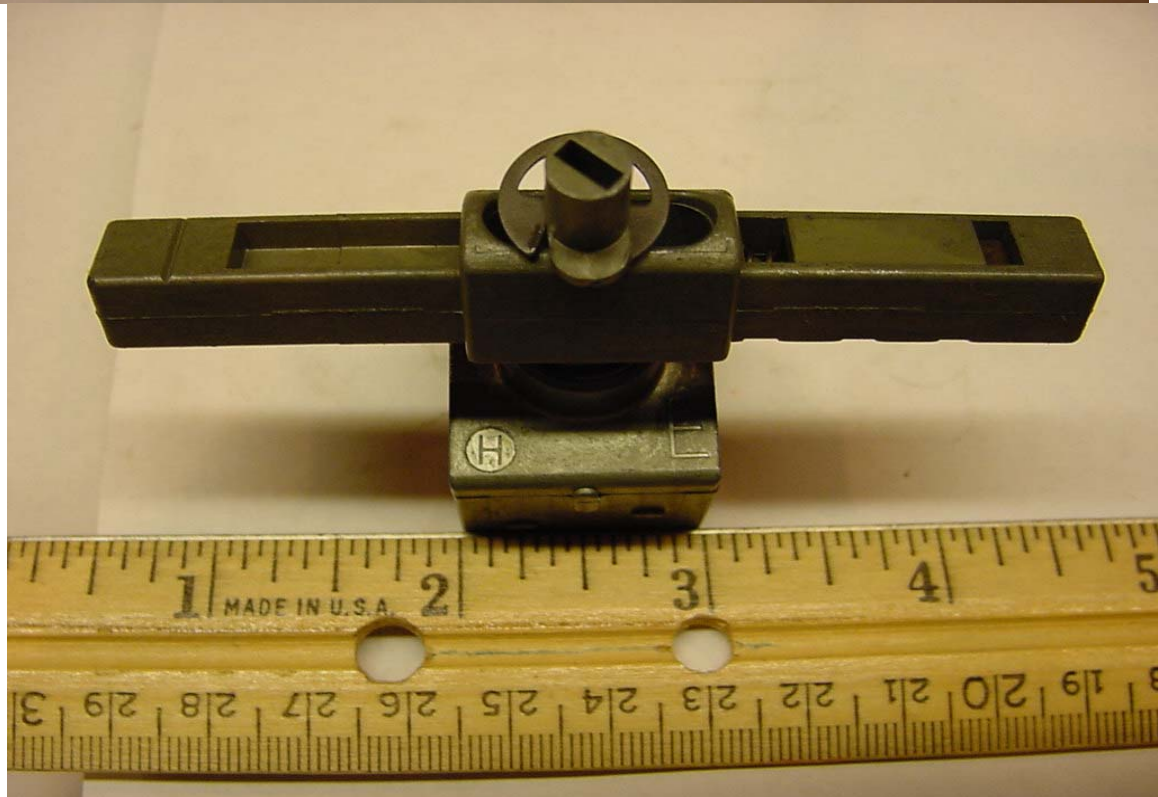
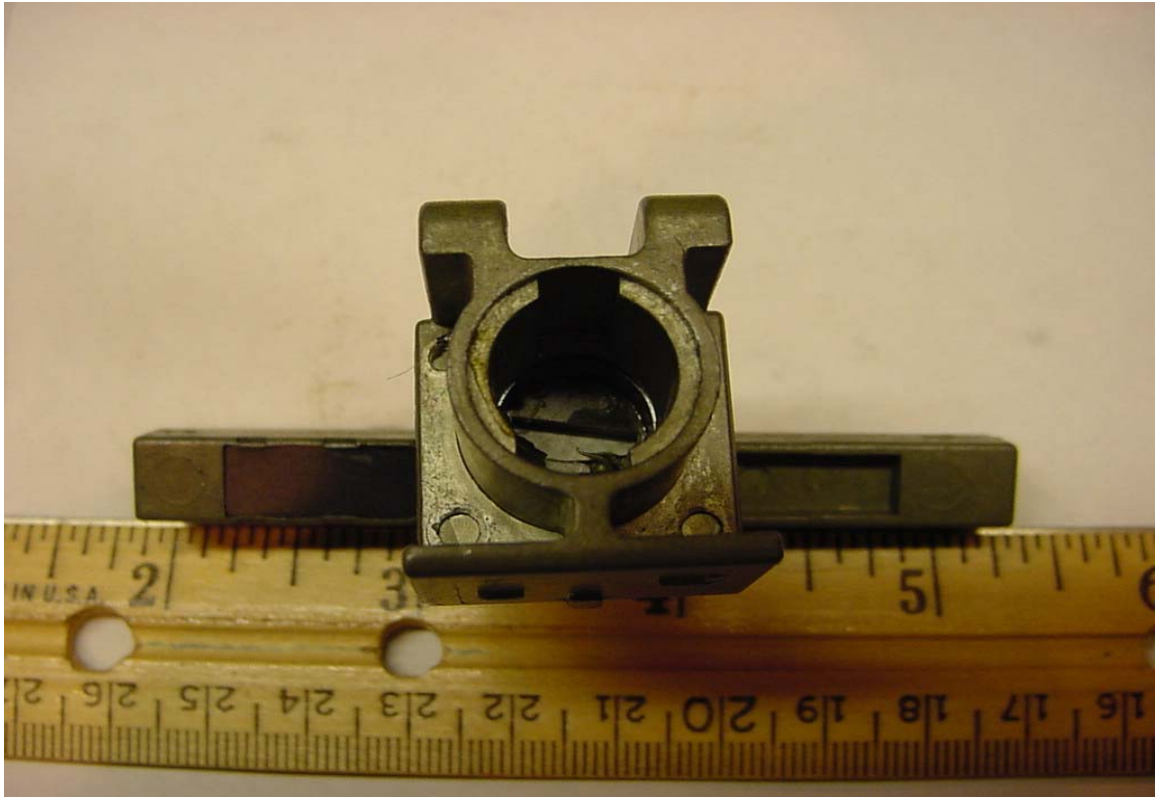
**CALIBRE HOUSING FOR "H" FILES WITH DRAWERS AND  
WARDROBES  
HLKR1379581**



**CALIBRE HOUSING FOR "K" FILE WITH FLIPPER DOOR  
HLKR1C69026G02**



**CALIBRE HOUSING FOR "H" FILE WITH FLIPPER  
HLKR1C69026G01**



**CALIBRE HOUSING FOR "K" OVERDESK  
HLKR7662C52H01**



**CALIBRE FILE CORE FOR SHAW WALKER LOCK  
HLKR5ZNBC**



**CALIBRE FILE SHAW WALKER CUT KEY ONLY  
HLKRSWSKEY**



**CALIBRE FILE SHAW WALKER BLANK KEY  
HLKRSWSBLANK**



**CALIBRE FILE, SHAW WALKER CHANGE KEY  
HLKRSWSCHANGE**





**CALIBRE FILE, SHAW WALKER MASTER KEY  
HLKRSWSMASTER**



**CALIBRE FILE, REFF CORE AND KEY  
HLKR5ZND**



**CALIBRE REFF CHANGE KEY  
HLKR5ZNDACHANGE**



**CALIBRE FILE, REFF MASTER KEY  
HLKRM1458716**



**CALIBRE FILE SHAW WALKER AND REFF HOUSING  
HLKR1379578**

