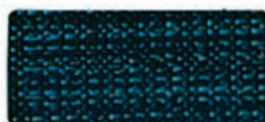


BRIO

Grade 7



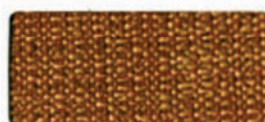
WC783-014 Aquamarine



WC783-004 Lagoon



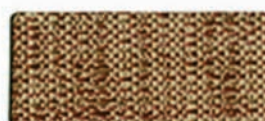
WC783-013 Celodon



WC783-019 Copper



WC783-001 Cinnabar



WC783-007 Flax



WC783-006 Granite

CRIBBAGE

Grade 6



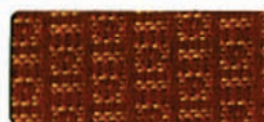
WC794-004 Admiral



WC794-024 Aquamarine



WC794-003 Celodon



WC794-009 Lantern



WC794-001 Rhubarb



WC794-002 Wheat



WC794-006 Granite

LEAFAGE

Grade 8



WC753-014 Lagoon



WC753-004 Navy



WC753-009 Autumn



WC753-000 Midlight

METRO

Grade 5



7599-C Marina



7598-C Peacock



7601-C Seaglass



7592-C Merlot



7596-C Geode



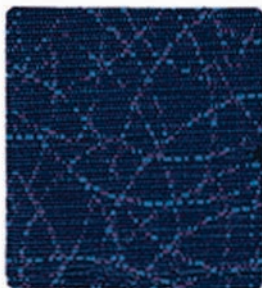
7589-C Conch



7600-C Gypsum

TRACERY

Grade 6



WC724-024 Marine



WC724-014 Blue Topaz



WC724-003 Meadow



WC724-001 Merlot



WC724-009 Cayenne



WC724-002 Cornsilk



WC724-006 Shadow

CITY LIGHTS

Grade 8



WC739-004 Parade



WC739-003 Meadow



WC739-009 Spice



WC739-007 Desert



Leaders in Reception Seating

TECHNICAL INFORMATION

Woven Crypton Selection

| Pattern 54" | Fiber Content and Backing | Weight/ Linear Yd | Pattern Repeat | Finish | Abrasion Wyzenbeek ^{A*} | Light ^{☀*} Fastness | Flammability ^{🔥*} | Cleaning Code |
|--|--|----------------------|---------------------|----------|-------------------------------------|---------------------------------|---|------------------|
| BRIO | 100% Polyester Crypton® backing | 14.6 oz. | Non- Matching | Crypton® | Exceeds 100,000 Double Rubs | 60 hours | Cal. 117-E (Equiv. to BIFMA) NFPA 260 (Equiv. to UFAC) | C |
| CITY LIGHTS <i>(Shown Railroaded)</i> | 100% Polyester Crypton® backing | 10.92 oz. | 1.75" H 1.75" V | Crypton® | Exceeds 50,000 Double Rubs | 40 hours | Cal. 117-E (Equiv. to BIFMA) NFPA 260 (Equiv. to UFAC) | C |
| CRIBBAGE | 100% Polyester Crypton® backing | 9.8 oz. | .63" H .63" V | Crypton® | Exceeds 50,000 Double Rubs | 40 hours | Cal. 117-E (Equiv. to BIFMA) NFPA 260 (Equiv. to UFAC) | C |
| LEAFAGE | 54% Rayon, 37% Polyester, 9% Recycled Polyester Crypton® backing | 14.4 oz. | 6.75" H 10.31" V | Crypton® | Exceeds 50,000 Double Rubs | 40 hours | Cal. 117-E (Equiv. to BIFMA) NFPA 260 (Equiv. to UFAC) | C |
| METRO | 100% Polyester Crypton® backing | 12 oz. | None | Crypton® | Exceeds 100,000 Double Rubs | 40 hours | Cal. 117-E (Equiv. to BIFMA) NFPA 260 (Equiv. to UFAC) | C |
| TRACERY | 56% Cotton, 44% Polyester Crypton® backing | 15.5 oz. | 4.5" H 4.69" V | Crypton® | Exceeds 50,000 Double Rubs | 40 hours | Cal. 117-E (Equiv. to BIFMA) NFPA 260 (Equiv. to UFAC) | C |

May comply with California Technical Bulletin 133 when combined with appropriate components.

CARE AND CLEANING INFORMATION

Prompt cleaning is always recommended.

C: Crypton Cleaning - Generally stains are removed with plain water and powdered enzyme detergent. Upholstery foam shampoo, water-based cleaning products and germicidal detergents can be used. Be sure to remove all residue from cleaning products with clean water. Do not use solvent-based cleaners or dry cleaning products. For the best cleaning solution, use CRYPTON UPHOLSTERY CLEANER. Contact Mayer Fabrics.

For detailed specifications, care and cleaning information for each pattern, please refer to the Mayer Fabrics web site at www.mayerfabrics.com.

CUSTOM CAPABILITIES

Patterns in the Mayer line can be custom colored. Please contact Mayer Fabrics for more information.

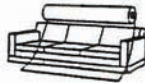
Please keep this card intact. Individual samples available.

Color matching: Mayer Fabrics will always attempt to ship a satisfactory commercial match. Because of industry standard dye lot variation, colors may not match exactly. Additional colors are available. Please contact Mayer Fabrics or refer to the Mayer Fabrics web site for more information. Specifications are correct at time of printing. Additional specifications may be available on the Mayer Fabrics web site.

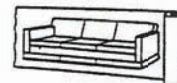
* ACT® Registered Certification Marks



Railroaded: This feature allows reduction of seams and enables smoother furniture tailoring.



Fabric "up the roll"
or "regular" position



Fabric "railroaded" or
"top selvage" position

All patterns should be upholstered as shown on card.