

Canon

imageWARE™

Accounting Manager

Version 5.0

Take control of your document
output and costs





imageWARE Accounting Manager

In a business environment characterized by escalating costs and pressures to minimize expenses, it's surprising that the cost of utilizing office equipment is not more aggressively managed.



• [imageWARE Accounting Manager Main Page](#)

Most Fortune 500 companies today cannot quantify the total spending associated with the use of basic equipment such as copiers, fax machines, and network printers.

Introducing Canon imageWARE Accounting Manager Version 5.0. This is a Web-based application that helps track and manage hard-copy document output costs for Canon branded and non Canon branded devices. With this application, IT administrators not only understand document output costs, they can easily realize their return on investment.

Using imageWARE Accounting Manager, administrators can download device workload statistics and generate usage reports by individual, group, device, or department, allowing companies to rightsize their devices and resources for optimal use.

What is imageWARE?

imageWARE is the brand name of Canon's office solutions products that simplifies complex tasks and improves enterprise productivity as it adapts to support any workflow requirement. imageWARE Software Suite gives customers the power to better manage information regardless of form, content, or location, while maximizing their bottom line. A fully integrated suite, imageWARE offers businesses a smarter way to work.

imageWARE™
Accounting Manager
Version 5.0

imageWARE Accounting Manager Puts You in Control



Any professional organization, association, or corporation that outputs documents can benefit from imageWARE Accounting Manager.

| Device Name | 03/2008 | 04/2008 | 05/2008 | Total |
|-------------|---------|---------|---------|--------|
| IP3300 | 778 | 1,126 | 712 | 2,617 |
| IP3300 | 778 | 1,126 | 712 | 2,617 |
| IP3300 | 906 | 809 | 667 | 2,382 |
| IP3020 | 1,818 | 2,115 | 997 | 4,931 |
| IP3020 | 1,818 | 2,115 | 997 | 4,931 |
| IP3020 | 1,894 | 1,762 | 835 | 4,491 |
| IP3320 | 181 | 77 | 44 | 302 |
| IP3320 | 181 | 77 | 44 | 302 |
| IP3320 | 189 | 77 | 43 | 299 |
| IP3320-C1 | 2,920 | 6,440 | 1,795 | 11,155 |
| IP3320-C1 | 2,920 | 6,440 | 1,795 | 11,155 |
| IP3320-C1 | 1,734 | 69 | 0 | 1,803 |
| IP3320-C1 | 1,734 | 69 | 0 | 1,803 |
| Total | 1,262 | 49 | 0 | 1,311 |

• Totals Prints/Copy Jobs on the Selected Devices

| Dept/User Name | 03/2008 | 04/2008 | 05/2008 | Total |
|----------------|---------|---------|---------|-------|
| Root01022X | 210 | 7 | 0 | 217 |
| Root01022X | 210 | 7 | 0 | 217 |
| Root011061 | 204 | 492 | 48 | 744 |
| Root011061 | 204 | 492 | 48 | 744 |
| Root011068 | 60 | 365 | 36 | 531 |
| Root011068 | 60 | 365 | 36 | 531 |
| Root00813 | 46 | 219 | 29 | 321 |
| Root00813 | 46 | 219 | 29 | 321 |
| Root00813 | 128 | 234 | 176 | 538 |
| Root00813 | 128 | 234 | 176 | 538 |
| Total | 1,824 | 2,287 | 601 | 4,712 |
| Total | 1,824 | 2,287 | 601 | 4,712 |
| Total | 1,322 | 1,683 | 424 | 3,429 |

• Totals Prints/Copies by Individual Departments and Users

This software integrates tightly with imageRUNNER® devices, and can also be used with non Canon devices via the Virtual Cash Controller (VCC).

In short, imageWARE Accounting Manager provides IT administrators with valuable tools such as reports, device load statistics, and other important data. imageWARE Accounting Manager lets IT administrators generate reports by individual, group, device, or department, and sorts output by total overall output and paper, to name a few. This intuitive software employs usage analysis to track waste and the unauthorized use of the office equipment for more effective management of resources. By employing its charge-back capability, an organization can provide customers or departments with accurate billing data on the volume of copies, prints, faxes, and scans on a per-project basis. This can significantly increase revenue, while also enabling a more accurate allocation of departmental expenses and budgets.

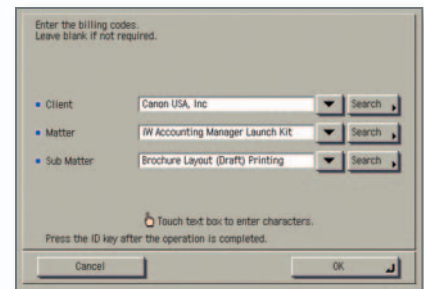
Empowered with imageWARE Accounting Manager, IT administrators will be able to chart the optimal deployment of office equipment. They can also rely on document-level print restriction to discourage the use of higher-cost machines and to increase overall security.

Designed for Any Environment

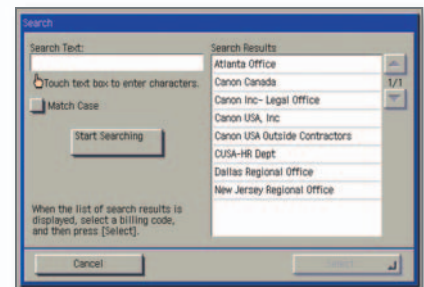
imageWARE Accounting Manager is ideal for any organization that needs to control the costs of printing, copying, faxing, and scanning. The software is flexible, easy to use, and simple to install on any server running Windows® 2000, Windows XP Professional, or Windows Server 2003 operating systems.

Perfect Billing Code Management **NEW!**

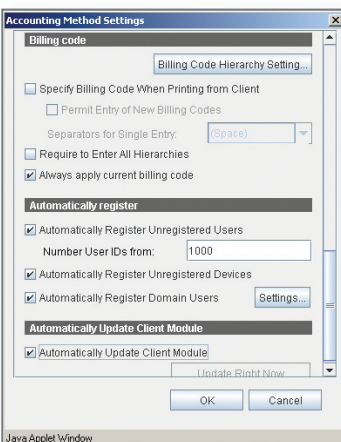
imageWARE Accounting Manager provides the Perfect Billing Code Management to law offices, design companies, and virtually any other company that needs to charge for its resources from imageWARE Accounting Manager Billing Code Plug-In. With it, IT administrators can track resources by assigning billing codes whenever copying/scanning/faxing from an imageRUNNER device. By installing the Billing Code Plug-In into a MEAP® enabled imageRUNNER device, user authentication and billing codes are input from the device's touch-panel, assigning billing codes to any kinds of jobs performed by the imageRUNNER device.



• Billing Code Plug-In Screen



• Billing Code Search Screen



• Configuration Screen

Simplified Administration and Maintenance

imageWARE Accounting Manager allows IT administrators to work efficiently. Consider that devices are automatically registered when an IP address or multicast discovery is performed. Plus, the software comes complete with robust features like Automatic Client Module Version updates, Printer Port Configuration, Windows Active Directory Synchronization with multiple domains, and Novell® NDPS support. Moreover, imageWARE Accounting Manager will synchronize between servers when used in environments with multiple domains.

Knowledge is Power

imageWARE Accounting Manager gives you a detailed snapshot of your organization's resources. You'll control your costs through a number of advanced capabilities:

- **Track by Paper Type:** Analyze and manage cost by paper type and size
- **Track by Individual, Group, or Department:** Determine how devices are being used
- **Single- or Double-Sided Output:** Account for single- and double-sided output, and N-up print/copy output
- **Copier Department ID:*** Automatically track device data on Canon copiers equipped with Department ID
- **Device Paper Consumption and Device Usage Costs:** Account for pages output, sheets used, and costs incurred with each device
- **Output Restriction:** Distinguish between color and black-and-white jobs and set usage limits
- **Analyze Department/Device Workload:** Make informed decisions about device allocation and placement
- **Regular Process:** Schedule automatic accounting processes, preferably during office downtime
- **Report Exportation:** Export accounting and analysis reports as CSV files
- **Web-Based Access:** Generate reports or any other administrative functions from anywhere on the network

*See back cover for supported models.

| Paper Type | 02/2006 | 03/2006 | 04/2006 | 05/2006 | Total |
|-------------|---------|---------|---------|---------|---------|
| Plain Paper | 48,260 | 48,847 | 33,190 | 18,790 | 145,080 |
| Heavy Paper | 51 | 200 | 2 | 0 | 257 |
| Color Paper | 42 | 62 | 0 | 0 | 104 |
| Total | 48,453 | 49,109 | 33,192 | 18,790 | 145,544 |

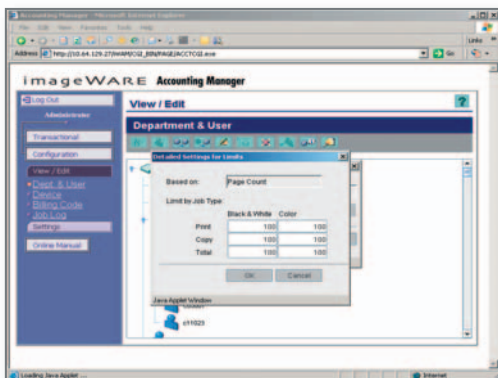
• Total Usage by Paper Type

A New Way to Do Business

Businesses of all sizes depend on Canon to provide innovative solutions to improve productivity and control costs. imageWARE Accounting Manager makes it easy to optimize your organization's network and maximize its bottom line.

When you're looking to boost efficiency, look no further than imageWARE Accounting Manager. It's powerful, practical, and flexible. Plus, it's from Canon, the name the world trusts for digital imaging solutions.

To see how imageWARE Accounting Manager can make a difference in addressing an organization's hard-copy output needs, please contact your local Authorized Canon Dealer or visit our Web site at www.imageware.com.



• Set Limits for Color and Black-and-White Print/Copy Jobs

imageWARE Accounting Manager Server

| | |
|---------------------|--|
| Hardware (Minimum): | Pentium® III, 800MHz or Faster 256MB or More RAM 500MB or More Free Hard Disk Space |
| Software: | Microsoft® Internet Information Server (IIS) 5.0.5.1, 6.0 Windows® 2000 Professional/Server + Service Pack 4 Windows XP Professional Edition + Service Pack 2 Windows Server 2003 Standard Edition + Service Pack 1 <i>(64-Bit Environments Including Windows XP and Server 2003 are Unsupported). SBC (Server Based Computing) Environments Including Terminal Server, Remote Desktop, MetaFrame and Cluster Server, etc. are Unsupported)</i> Microsoft SQL Server 7.0/Microsoft SQL Server 2000 + Service Pack 4/Microsoft Data Engine (MSDE) 2000 + Service Pack 4 <i>Note: Authentication for Database Server (MS SQL7/SQL Server 2000/MSDE 2000) Must be Set to be "Mixed Mode."</i> Canon imageWARE Accounting Manager Server Software |

Users and Devices Supported
Per Server (Recommended): Number of Users: 500 (Max. 1000)
Number of Devices: 100
Note: Authentication must be set to "Mixed Mode."

imageWARE Accounting Manager Central Server

| | |
|---------------------|--|
| Hardware (Minimum): | Pentium® III, 860MHz 512MB or More RAM 500MB or More Free Hard Disk Space |
| Software: | Microsoft® Internet Information Server (IIS) 5.0.5.1, 6.0 Windows® 2000 Professional/Server + Service Pack 4 Windows XP Professional Edition + Service Pack 2 Windows Server 2003 Standard Edition + Service Pack 1 <i>(64-Bit Environments Including Windows XP and Server 2003 are Unsupported). SBC (Server Based Computing) Environments Including Terminal Server, Remote Desktop, MetaFrame and Cluster Server, etc. are Unsupported)</i> Microsoft SQL Server 7.0/Microsoft SQL Server 2000 + Service Pack 4/Microsoft Data Engine (MSDE) 2000 + Service Pack 4 <i>Note: Authentication for Database Server (MS SQL7/SQL Server 2000/MSDE 2000) Must be Set to be "Mixed Mode."</i> Canon imageWARE Accounting Manager Server Software |

Client Computer (Computer performing print activities)

| | |
|---------------------|---|
| Hardware (Minimum): | Pentium® III, 450MHz or Faster 128MB or More RAM 200MB or More Free Hard Disk Space |
| Software: | Windows 98SE/Me Windows 2000 Server/Professional + Service Pack 4 Windows XP Home/Professional Edition + Service Pack 2 Windows Server 2003 + Service Pack 1 <i>(64-Bit Environments Including Windows XP and Server 2003 are Unsupported). SBC (Server Based Computing) Environments Including Terminal Server, Remote Desktop MetaFrame and Cluster Server, etc. are Unsupported)</i> Canon imageWARE Accounting Manager Client Module Software (Required When Printing to Non-imagePlatform Devices and Using Billing Codes) |

Computer for Viewing Reports and Performing Administration

| | |
|-----------|---|
| Software: | Windows 98SE/Me Windows 2000 Server/Professional + Service Pack 4 Windows XP Home/Professional Edition + Service Pack 2 Windows Server 2003 Standard Edition + Service Pack 1 (Except Terminal Server, Terminal Services, and Remote Desktop Features) Sun Java2 Runtime Environment (J2RE) V1.4.2_10 Internet Explorer 5.5 SP2 or Higher (MSXML with Microsoft XML Parser Version 3.0 or Above Must be Installed) |
|-----------|---|

Print Server (if Necessary)

| | |
|-----------|--|
| Software: | Windows 2000 Server + Service Pack 4 Windows XP Professional Edition + Service Pack 2 Windows Server 2003 Standard Edition + Service Pack 1 Canon imageWARE Accounting Manager Client Module Software |
|-----------|--|

Supported Devices (Canon Log-Capable)

| | |
|--|---|
| Accounting Print Jobs (No Clients Module Needed): | imageRUNNER 105+/105/9070/85+/85/8500/8070/7200/ 7105/7095 /7095 Printer/7086/6570/6020i/6020/6000/ 5570/5020i/5020/5000i/5000/4570/3570/3530/3300i/ 3300/3320i/3320/2870/2800/2270/2230/2220i/2220/ 2200/2020/2016/2010F/2000/1600, iR3250 Color imageRUNNER C3220/C3200/C2620 imageRUNNER C6870U/C6800/C5870U/C5800/C3170/C3100 |
| Copy Jobs (Department ID Mode): | imageRUNNER 105+/105/9070/85+/85/8500/8070/7200/7105/ 7095/7095 Printer/7086/6570/6020i/6020/6000/5570/ 5020i/5020/5000i/5000/4570/3570/3530/3300i/3300/ 3320i/3320/2870/2800/2270/2230/2220i/2220/ 2200/ 2020/2016/2010F/2000/1600, iR3250 Color imageRUNNER C3220/C3200/C2620 imageRUNNER C6870/C6800/C5870U/C5800/C3170/C3100 |
| Fax Jobs: | imageRUNNER 6570/5570/5070/5000i/4570/3570/3530/ 3320i/3320/3300i/3300/2870/2270/2230/2220i/2220/ 2010F/2000/1600 Color imageRUNNER C3220/C3200/C2620 imageRUNNER C6870/C6800/C5870U/C5800/C3170/C3100 imageCLASS 2300 |
| Scan Jobs: | imageRUNNER 7105/7095/7095 Printer/7086/6570/5570/ 5070/4570/3570/ 3530/2870/2270/2230 Color imageRUNNER C3220/C3200/C2620 imageRUNNER C6870/C6800/C5870U/C5800/C3170/C3100 |

Billing Code Input Login Application (MEAP) Supported Devices

imageRUNNER 105+/9070/85+/8070/7105/7095/6570/5570/
5070/4570/2270
imageRUNNER C6870U/C5870U/C3170
*Note: Firmware update is required on imageRUNNER
105+/9070/85+/8070/4570/2270 for Billing Code Input Login
Application Support.*

Canon
image*ANYWARE*

Visit our Web site at www.imageWARE.com

A Smarter Way to Work

Microsoft and Windows are registered trademarks of Microsoft Corporation in the United States and/or other countries. Pentium is a trademark or registered trademark of Intel Corporation or its subsidiaries in the United States and/or other countries. CANON and MEAP are registered trademarks of Canon Inc. in the United States and may also be registered trademarks or trademarks in other countries. IMAGEWARE is a registered trademark of Canon U.S.A., Inc. in the United States and is a trademark of Canon Inc. in certain other countries. IMAGEANYWARE is a trademark of Canon. All referenced product names and other marks are trademarks of their respective owners. Specifications subject to change without notice.
©2006 Canon U.S.A., Inc. All rights reserved

0060W355
0606-IWAM-5M-GKP

 PRINTED ON RECYCLED
PAPER IN THE U.S.A.

1-800-OK-CANON
www.usa.canon.com

Canon U.S.A., Inc.
One Canon Plaza
Lake Success, NY 11042