



HP WebInspect software

Data sheet



HP WebInspect software is web application security assessment software designed to thoroughly analyze today's complex web applications. It delivers fast scanning capabilities, broad assessment coverage and accurate web application scanning results.

Get the next generation in web application scanning

HP WebInspect software is industry-leading web application security assessment software. HP WebInspect addresses the complexity of Web 2.0 and identifies vulnerabilities that are undetectable by traditional scanners. HP WebInspect tackles today's most complex web application technologies with breakthrough testing innovations, including simultaneous crawl and audit (SCA) and concurrent application scanning, resulting in fast and accurate, automated web application security testing.

Identify security vulnerabilities in your web applications and services

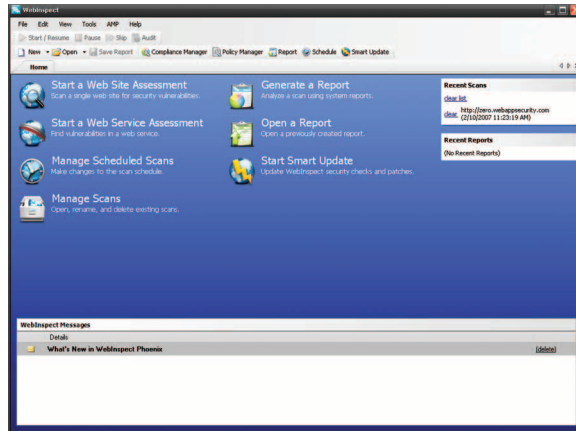
HP WebInspect is easy-to-use, extensible and accurate web application security assessment software. HP WebInspect helps both security professionals and security novices identify critical, high-risk security vulnerabilities in your web applications and web services.

Support even the most complicated environment

Most application scanners are designed for legacy web technologies and lack the intelligence required to scan emerging Web 2.0 applications that use Ajax, SOAP, JavaScript and Flash. HP WebInspect can analyze today's web application technologies, including rich content sites that use two-factor authentication and other web advancements. Its architecture enables HP WebInspect to see the entire application, resulting in few false negatives.

Quickly analyze applications and web services

Through an intuitive, wizard-driven interface, you designate which application or web service you want to analyze. You can also select which type of assessment to run and which security policy to use for each web application assessment.



Support regulatory and legal and compliance

HP WebInspect includes detailed reports that show how your web applications should change to meet most regulatory standards. In addition, you can create new policies or customize an existing one with the policy and compliance editor. Policies are provided for more than 20 laws, regulations and best practices, including:

- Sarbanes-Oxley (SOX)
- California SB 1386
- Gramm-Leach-Bliley Act (GLBA)
- Health Insurance Portability and Accountability Act (HIPAA)
- ISO 17799
- Payment Card Industry (PCI) Data Security Standard (DSS) compliance
- OWASP Top Ten

Have enterprise-wide security assessment

HP WebInspect integrates with HP Assessment Management Platform software for enterprise-wide, distributed assessment capabilities. HP Assessment Management Platform provides a scalable, organization-wide view of application security with centralized control over user permissions, security policies and remote scanning administration. HP WebInspect also includes the ability to submit vulnerabilities directly into HP Quality Center software so that development and quality assurance (QA) teams can receive, manage and resolve security defects alongside other application defects.

Dramatically reduce your organizational risk

HP WebInspect can detect vulnerabilities through its comprehensive and sophisticated approach to web application assessments. It includes several breakthrough

innovations, such as its simultaneous crawl and audit feature and Intelligent Engines feature, which increases its accuracy.

Simultaneous crawl and audit combines application crawl and audit phases into a single fluid process. The scan is refined based on real-time audit findings, resulting in a comprehensive view of an entire web application's attack surface. Intelligent Engines employs a structured, logic-based approach to analyzing an application and then customizes attacks based on the application's behavior and environment. HP WebInspect combines these sophisticated, ground-breaking assessment technologies with known web application vulnerabilities that are stored in a vulnerability database.

Furthermore, you can launch and manage multiple concurrent scans, greatly increasing testing throughput. This scanning technology, combined with support for today's web applications, results in an accurate and fast assessment.

Save time

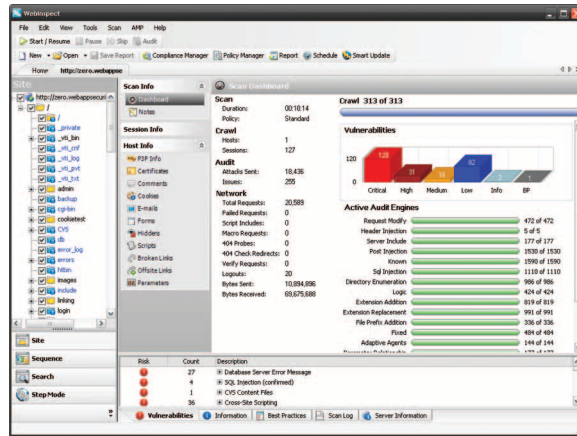
HP WebInspect is easy to configure and use. It requires no server-side installations and can be used remotely for web application assessments. With its wizard interface, you can easily run a fully automated web application assessment and manually interact with it throughout the assessment process. Advanced users can initiate scans through the command line interface.

Customize for your environment

HP WebInspect lets you extend the product's capabilities to meet your organization's specific needs. You can configure HP WebInspect to adapt to any web application environment and use the custom check wizard to create custom attacks. The policy manager lets you select and configure attacks down to the check level.

View scans while they occur

While a scan is in progress, you can watch and interact via the sophisticated client interface. You can stop the scan to investigate an issue or drill down into a specific area while the scan continues.



Improve your influence through sophisticated reports

HP WebInspect includes a variety of pre-configured reports such as C-level trend reports, detailed developer-focused reports and pass/fail compliance reports that demonstrate the state of your organization's security. HP WebInspect also lets you edit any aspect of the report and add custom notes or details. HP WebInspect report data can be exported to a number of standard formats, including XML, HTML and PDF.

Part of a lifecycle approach to application security

HP WebInspect is part of HP Application Security Center, which include products and services that identify and fix security vulnerabilities throughout the web application lifecycle. HP Application Security Center software fosters collaboration among developers, QA testers and security professionals and reduces the risk and expense typically associated with discovering security defects in production. By identifying vulnerabilities before applications are released to production and preventing new vulnerabilities from being introduced throughout the life of the application, trustworthy software becomes a reality.

Key features and benefits

Innovative assessment technology

- Produce faster scans and more accurate results through the combined application crawl and audit process
- Reduce false negatives and broaden coverage using scan technology built specifically for today's complex applications
- Increase testing throughput with support for multiple concurrent scans

- Enter a URL, username and password to quickly initiate a simple scan for immediate results
- Reduce the complexities of authentication even with applications using advanced technologies such as two-factor authentication or CAPTCHAs
- Use the scan profiler to analyze an application and get suggested scan configuration settings to optimize the effectiveness and accuracy of the scan

Sophisticated user interface

- View scan results within seconds of starting an assessment
- Review and control multiple scans and reports through a tabbed interface
- Submit false positive reports and other feedback directly to HP with just one click
- Interact with your scan through an easy-to-use interface
- Create macros to record testing steps and automate repeated testing
- Develop custom checks quickly and easily using the custom check wizard

Detailed reporting and compliance

- Show a snapshot of your enterprise-wide security status with high-level management reports
- Customize reports for development and QA teams to address security defects
- Run compliance reports for all major regulatory standards, including PCI, SOX and HIPAA, using scan data
- Watch application security trends with trend analysis and security readiness reporting

HP WebInspect checks for:

Data injection and manipulation attacks

- Reflected cross-site scripting (XSS)
- Persistent XSS
- Cross-site request forgery
- SQL injection
- Blind SQL injection
- Buffer overflows
- Integer overflows
- Log injection
- Remote File Include (RFI) injection
- Server Side Include (SSI) injection
- Operating system command injection
- Local File Include (LFI)

Sessions and authentication

- Session strength
- Authentication attacks
- Insufficient authentication
- Insufficient session expiration

Server and general HTTP

- Secure Sockets Layer (SSL) certificate issues
- SSL protocols supported
- SSL ciphers supported
- Server misconfiguration
- Directory indexing and enumeration
- Denial of service
- HTTP response splitting
- Windows 8.3 file name
- DOS device handle DoS
- Canonicalization attacks
- URL redirection attacks
- Password autocomplete
- Cookie security
- Custom fuzzing
- Path manipulation—traversal
- Path truncation
- Ajax auditing
- WebDAV auditing
- Web services auditing
- File enumeration
- Information disclosure
- Directory and path traversal
- Spam gateway detection
- Brute force authentication attacks
- Known application and platform vulnerabilities

Advanced tools for penetration testers (HP Security Toolkit)

- SQL injector: extract entire databases by using SQL injection vulnerabilities
- Cookie cruncher: analyze the strength of cookies to avoid session hijacking
- Encoder: translate different encryption and encoding standards
- HTTP editor: create and edit raw HTTP requests
- Regex editor: test and build regular expressions
- SOAP editor: generate and edit raw web services requests
- Web Fuzzer: identify buffer overflows using HTTP fuzzing or modify input variables
- Web Proxy: view every request and server response while browsing a site
- WebBrute: test the strength of login forms or web and proxy authentication systems
- WebDiscovery: identify and discover which web servers and web applications are behind which ports
- Server analyzer: identify a web server or device and perform deep SSL analysis
- Traffic monitor: monitor every HTTP request and response sent during the crawl and audit

Technical specifications

- 1 GB of RAM
- 2 GB of free disk space
- An active Internet connection (for updates)
- 1.5 GHz processor or better
- Microsoft® Internet Explorer 6.0 or 7.0
- Microsoft .NET 2.0 or 3.0
- Windows® XP Professional SP2, Windows Server 2003 Standard SP1, Windows Vista®
- SQL Server 2005 or SQL Server Express SP1
- Adobe Reader 7 or newer (for reading reports in .pdf format)
- Minimum screen resolution of 1024 x 768 (For best performance, a screen display of 1280 x 1024 is recommended.)

HP Services

Get the most from your software investment

HP provides high-quality software services that address all aspects of your software application lifecycle needs. With HP, you have access to standards-based, modular, multi-platform software coupled with global services and support. The wide range of HP service offerings—from online self-solve support to proactive mission-critical services—enables you to choose the services that best match your business needs.

For an overview of HP software services, visit www.managementsoftware.hp.com/service.

To access technical interactive support, visit Software Support Online at www.hp.com/managementsoftware/services.

To learn more about HP Software Customer Connection, a one-stop information and learning portal for software products and services, visit www.hp.com/go/swcustomerconnection.

A complete solution

Comprehensive training

HP provides a comprehensive curriculum of HP Software and IT Service Management courses. These offerings provide the training you need to realize the full potential of your HP solutions, increase your network optimization and responsiveness, and achieve better return on your IT investments.

With more than 30 years experience meeting complex education challenges worldwide, HP knows training. This experience, coupled with unique insights into HP Software products, positions HP to deliver the optimum training experience. For more information about these and other educational courses, visit www.hp.com/learn.

The smartest way to invest in IT

HP Financial Services provides innovative financing and financial asset management programs to help you cost-effectively acquire, manage and ultimately retire your HP solutions. For more information on these services, contact your HP sales representative or visit www.hp.com/go/hpfinancialservices.

Contact information

To find an HP Software sales office or reseller near you, visit www.managementsoftware.hp.com/buy.

© Copyright 2007 Hewlett-Packard Development Company, L.P. The information contained herein is subject to change without notice. The only warranties for HP products and services are set forth in the express warranty statements accompanying such products and services. Nothing herein should be construed as constituting an additional warranty. HP shall not be liable for technical or editorial errors or omissions contained herein. Microsoft and Windows are U.S. registered trademarks of Microsoft Corporation. Windows Vista is either a registered trademark or trademark of Microsoft Corporation in the United States and/or other countries.

To learn more, visit www.hp.com/go/software

4AA1-5363ENW, September 2007

