



January 31, 2008

Product Announcement

Philips Speech Processing

Conference Recording Set 955

Philips Speech Processing announces the release of the new Conference Recording Set LFH955. Based on the award winning design of the DIGITAL POCKET MEMO3 platform the new 955 is enhanced with two channel recording functionality and latest encoding technology.

Designed to meet the needs of the business meeting environments and conference settings the LFH 955 Conference Recording Set delivers the unique set of features required by these demanding markets.

Key Target Groups

Organizations in need for easy to use, convenient, office conference recordings, such as in:

- Legal offices
- Municipal meetings
- Large Organization meetings:
 - Union meetings
 - Kiwanis meetings
- Insurance companies
- Police, law enforcement
- General business





Product Positioning

Small- to mid sized conferences - archival and/or transcription.

Small conferences – out-of-the-box solution

Number of participants up to:

- 14 people

Conference table size up to:

- 5m/16.5ft x 2.5m/8ft

Mid-size conferences – maximum extension

Number of participants up to:

- 32 people

Conference table size up to:

- 13m/42.5ft x 2.5m/8ft – long table shape
- 6m/20ft x 7m/23ft – U-shape table

Typical Use Case

Small conferences for archiving and/or transcription

Use case

A meeting needs to be recorded in order to have a reference to archive – it also might be transcribed and typed for distribution to participants.

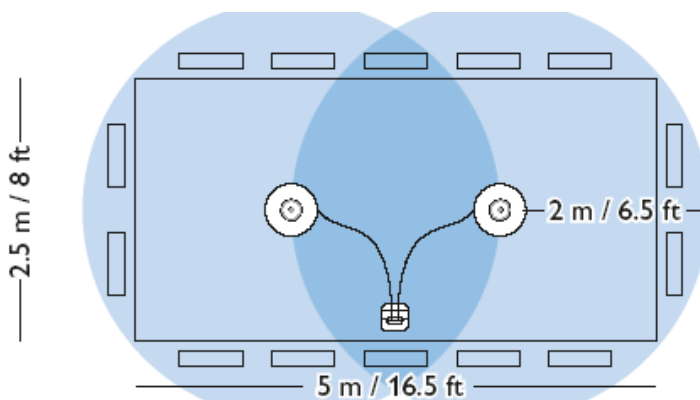
Operation

Someone is assigned to set-up and operate the recording system.

Through the connected Remote Control the operator can simply **START | STOP** a **RECORDING**, set **INDEX** marks at relevant positions for convenient finding later on.

The operator will press the **EOL** button available on the Remote Control whenever an agenda point is covered to automatically record the next agenda point into a **NEW** file.

Potential Layout





Typical Use Case

Mid size conferences for archiving and/or transcription

A meeting needs to be recorded in order to have a reference to archive – it also might be transcribed and typed for distribution to participants.

Operation

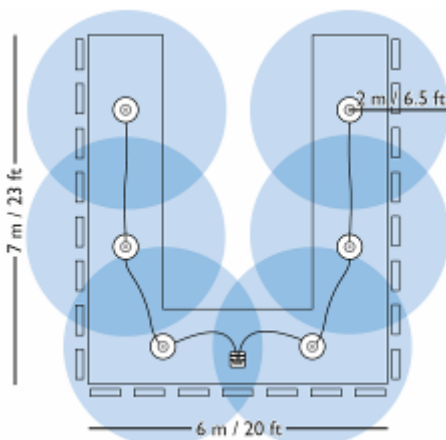
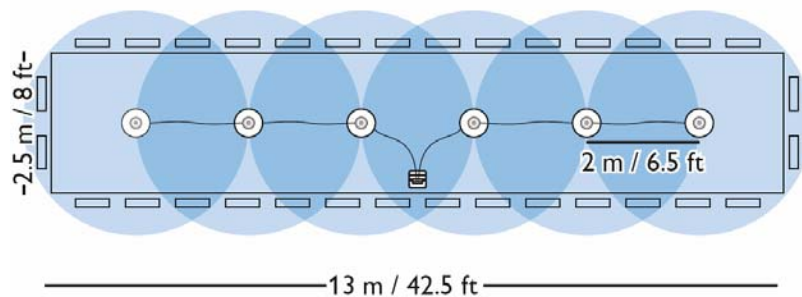
A person is assigned to set-up and operate the recording system.

The system has been extended with additional microphones (up to 6) to cover the larger table size.

Through the connected Remote Control the operator can simply START | STOP a RECORDING, set INDEX marks at relevant positions for convenient finding later on.

The operator will press the EOL button available on the Remote Control whenever an agenda point is covered to automatically record the next agenda point into a NEW file.

Potential Layouts





What's Available in the LFH 955

Included in the metal carry case:

- Digital Pocket Memo with two-channel recording
 - Two-channel audio encoding
- Two Philips Boundary Layer Microphones
 - Option to cascade | extend with additional microphones
- Click on Stereo Interview Microphone
- Remote Control – for conference operation
 - RECORD | STOP | INDEX marks | End-of-Letter
 - Docking station LFH 9120
 - Power supply LFH 9146
 - Rechargeable batteries LFH 9154
 - 1GB SD memory card
- Professional software included
 - File playback, editing, splitting
 - transfer, archive, review
- User Manual – EN | DE | FR | ES | NL | IT
- Power supply
- USB Docking Station
- DIGITAL POCKET MEMO Conference Recorder
- 2 Boundary Layer Microphones
- Remote Control – REC | STOP, INDEX, EOL
- Click on Interview Microphone
- Smart Key for faster software installation
- 1 GB SD memory card
- Interchangeable primary power adapters





- Rechargeable batteries - 9154

Product Benefit Overview

The Conference Recording Set 955 includes following key benefits:

Feature	Advantage	Benefit
<ul style="list-style-type: none"> • Fast set-up 	Hassle free installation	You can focus on your business - immediately record your conference/meetings
<ul style="list-style-type: none"> • Compact Carry Case 	Take the conference recording system case to where it is required	Mobility - all you need is stored in a convenient metal case
<ul style="list-style-type: none"> • Fit into existing Transcription workflow - works with standards 	Uses standard formats (wav, mp3, DSS), standard memory cards (SD/MMC) and connectors (USB, EAR, MIC)	Work seamlessly - with open standards
<ul style="list-style-type: none"> • Easy to use 	Clear status avoids user guesswork and user mistakes	No lost words - focus on the content of your conference.
<ul style="list-style-type: none"> • Remote Control 	Allows you to START / STOP a recording, set INDEX markers and instantly start a NEW recording.	Work smarter - save time. Fast, convenient agenda separation, documentation and reviewing of recordings guaranteed.
<ul style="list-style-type: none"> • Expandability Scalable 	Microphones can be cascaded extended according to your needs.	Expandability & future proof – grows with your business and conference size needs.

Product Key Advantages and Selling Arguments

CD like audio quality – unlike for other systems there is an encoding format built in which records in uncompressed Audio CD format – for full clear transparency: PCM, 44.1kHz, 16bit

Compact DSS/DS2 file encoding – the most compact voice recording format built in, for faster file transfer and less network traffic. Choice of recording formats:

- PCM – Audio-CD Quality
- MP3 – Super High Quality st.
- MP3 – High Quality stereo
- DSS QP – quality mono
- DSS SP – compact mono



Fast USB charging – when connected through USB to a Notebook the rechargeable batteries are charged.

Exchangeable memory – for virtually unlimited recording space and quick hand over to transcription or for convenient archiving – uses worlds most commonly memory card standard.

Professional docking station – available and included.

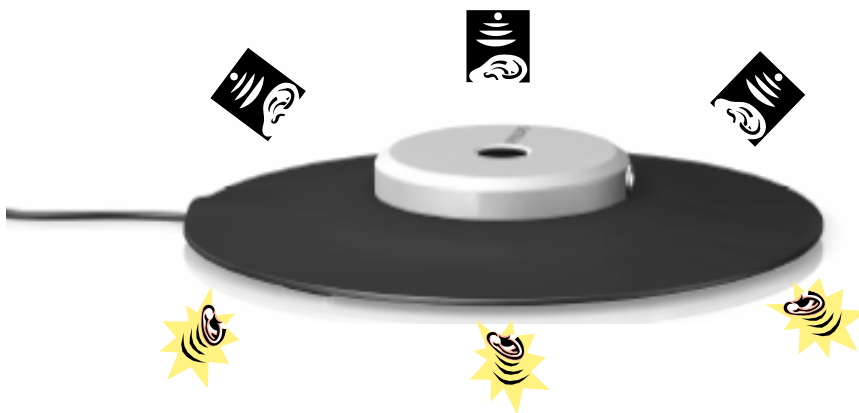
Boundary Layer Microphone - Technology

How does it work?

The sound waves have a pressure maxima directly in front of a sound reflecting surface – the table.

The acoustic pressure in front of the surface is therefore twice as high as in the free sound field. This effect is utilized in boundary-layer microphones.

(Source: United States Patent 5168525 - boundary-layer microphone – description of the technology)



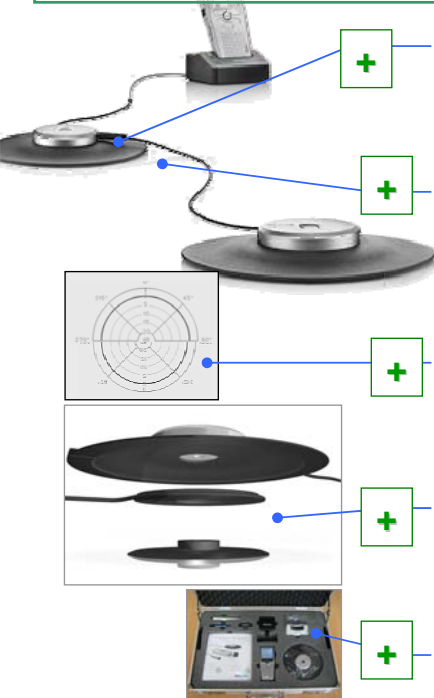

The sensitivity of the transducer is raised by 6 dB relative to the free field due to the increase in sound pressure immediately on the surface up to a double value.

(Source: United States Patent 5168525 - boundary-layer microphone – description of the technology)



Boundary Layer Microphone – Key Advantages

PHILIPS PHILIPS SPEECH PROCESSING

Boundary Layer Microphone	Key Advantages
PHILIPS - Boundary Layer Microphone	OTHER typical microphone systems
 <ul style="list-style-type: none"> + Simple to place – unlike for other systems there is no microphone stand required + Expandable through cascading - up to 6 microphones can be connected, 3 per channel + 360 degree pickup – frequency independent, uses the effect of the acoustic pressure of the surface + Wire storage & length adaptation - built into bottom part + Metal carry case – everything securely stored all in one, Aluminum 	 <ul style="list-style-type: none"> - - - - -

CONFIDENTIAL

Key conference features:

- Sound Quality - Boundary Layer Microphone
- No Stand required – easy to place
- Non directional microphone
- Frequency response is uniform
- Storage space for wire included
- Expandable – daisy chain feature



System Requirements

Q: What needs to be in place in order to work with the Digital Pocket Memo?

A: Following needs to be available in order to work with DIGITAL POCKET MEMO 955 & SpeechExec Pro Dictate

- The user **works in a company with following IT conditions:**
 - o **LAN** network with following conditions:
 - Network Speed: 100Mbit/s
 - Network protocol: TCP/IP
 - No LAN – user hands over memory card or downloads at Transcription PC
 - o The **File Server** runs on one of below Operating Systems:
 - MS Windows 2000 SP4
 - MS Windows 2000 Server & 2003 Server
 - MS Windows XP 32bit & 64 bit
 - MS Windows Vista 32bit & 64bit
 - No File server – user hands over memory card or downloads at Transcription PC

The **Client PC** runs on one of below Operating Systems:

- MS Windows 2000 SP4
 - MS Windows XP 32bit & 64bit
 - MS Windows Vista 32bit & 64bit
 - o The **Client PC** fulfils following PC requirements:
 - 150 MB free HDD space
 - 512 MB RAM required for MS Windows 2000, XP
 - 1 GB RAM required for MS Windows Vista
 - o One of the **following E-mail systems** will be used:
 - MS Outlook Express 7
 - MS Outlook 2003
 - MS Exchange Server 2000/2003
 - Lotus Notes 6.0.3
 - Lotus Notes 6.5.5
 - Lotus Notes 7
 - Novell GroupWise
 - No E-mail system – user hands over card, downloads at Transcription PC or uses LAN
- A Transcriptionist / **Secretary is available to receive and type** the dictation files
 - Philips **SpeechExec Pro Transcribe v5.0** is available & installed for two channel transcription.



Documentation

DIGITAL POCKET MEMO 955 Documentation	
DIGITAL POCKET MEMO Menu Languages	English French German Spanish
Quick Start Guide, 2pg printed	Very language neutral - lots of drawings
User Manual, printed	English French German Spanish Italian Dutch

SpeechExec Dictate [v5.0] Documentation	
User Interface Languages	English French German Spanish Dutch Czech
Quick Reference Guide, printed	English French German Spanish Dutch
On-line help	English (also for CZ and NL) French German Spanish
Readme.htm	English



Technical Specification – Digital Pocket Memo 955/10

Speaker

Built-in 30 mm round dynamic speaker
Output power: 200 mW

Accessories

Philips Secure Digital (SD) memory card
2 rechargeable Philips AAA batteries 9154
USB Docking Station 9120
Philips power supply 9146
Mini-USB cable
Quick Reference Guide
User Manual
SpeechExec Pro Dictate software on CD-ROM

Power

Power supply: 6 V DC / 850 mA
Power consumption: 800 mA max. (during charging)
Battery type: two Philips AAA Ni-MH, rechargeable batteries (LFH 9154) or two AAA batteries (LR03 or R03)

Battery life (Standard Play mode)

17.5 hours with Philips Ni-MH rechargeable battery / 15 hours with Philips alkaline battery

Charging time (full charge)

USB fast charging or power supply: 2.5 hours

Specifications

Product dimensions (W x D x H):
50 x 116 x 17 mm / 2.0 x 4.6 x 0.7"
Weight: 106 g / 3.7 oz including batteries

Input/output

Docking connector: 8 pin female
USB: Mini-USB 2.0 female (full speed, 12 Mbit/s)
DC in: 6 V

Memory card: Secure Digital (SD) / Multimedia (MMC)

Microphone jack:

Stereo jack: 3.5 mm
Input impedance: 2 k Ω
Rated input level: 5.3mVrms - Dictate mode
Minimum input level: 3.0mVrms -
Channel separation: >50 dB
S/N ratio (1kHz IHF-A) for PCM: > 70dB

Earphone jack:

Stereo jack: 3.5 mm
Load impedance: 8 Ω or more
Rated output level: 400mV
Maximum output level: 30mW or more
Channel separation: >50 dB
S/N ratio (1kHz IHF-A) for PCM playback: 60dB

Display

Type: TFT-Trans reflective
Diagonal screen size: 1.71 inch / 44 mm
Resolution: 128 x 128 pixels
Backlight color: White

Green Specifications

Compliant to 2002/95/EC (RoHS)
Lead-free soldered product

Operation conditions

Temperature: 5° - 45° C / 41° - 113° F
Humidity: 10 % - 90 %

Recording format / Sample rate / Compression rate

SP mode:	DSS	12 kHz	13.5 kbit/s
QP mode:	DS2	16 kHz	27 kbit/s
HQ mode:	MP3	32 kHz	64 kbit/s
XHQ mode:	MP3	44.1 kHz	128 kbit/s
PCM mode:	WAV	44.1 kHz	1411 kbit/s

Quantification rate:

All recording formats: 16bit - like the Audio CD

Recording media

Secure Digital (SD) memory card up to 2 GB
Multi Media Card (MMC) up to 2 GB

Recording time:

With 2GB memory card:
PCM (Pulse Code Modulation): 3.1 hours
XHQ (Extra High Quality): 36 hours
HQ (High Quality): 72 hours
Quality Play (QP): 170 hours
Standard Play (SP): 340 hours

Frequency response

Input Microphone input jack when recording (-10 - 0dB)

PCM:	Voice filter mode:	300Hz – 8.000 Hz
	Music filter mode:	50 Hz – 20.000 Hz
XHQ:	Voice filter mode:	300Hz – 8.000 Hz
	Music filter mode:	50 Hz – 20.000 Hz
HQ:	Voice filter mode:	300Hz – 8.000 Hz
	Music filter mode:	50 Hz – 15.500 Hz
QP:	Voice filter mode:	300Hz – 7.000 Hz
	Music filter mode:	not applicable
SP:	Voice filter mode:	300Hz – 5.700 Hz
	Music filter mode:	not applicable



Product Availability

Press Release on January 28, 2008.

Products are scheduled for full distribution the first week in April.

Product Distribution

The **LFH 955** is only sold purely through the value-adding professional channels - Philips Authorized MDC, MDCE, & MDCi.

The **LFH 9172** will be available through all channels. This will allow for additional accessory business – upgrading (analog) LFH 172 conference microphones.

LC-Display Overview

PHILIPS
PHILIPS SPEECH PROCESSING

FAQ

“What information is available on the LC-Display?”

<ol style="list-style-type: none"> 1 Current function of the left smart button 2 File name 3 Left level meter (available with external two channel recording) 4 Recording contains index mark 5 Position bar 6 Current position in the recording 7 Recording number 8 Battery level indicator 9 Recording mode 	<ol style="list-style-type: none"> 10 Memory card is write-protected (locked) 11 Voice-activated recording in progress 12 Remaining recording time 13 Recording is marked priority 14 Recording is marked finished (EOL) and locked 15 Right / monaural level meter 16 Recording / playback time 17 Sensitivity level for voice-activated recording 18 Current function of the right smart button
---	--

CONFIDENTIAL



Service and Support Strategy

In case of malfunction the LFH955 will be exchanged during the warranty period – for detailed analysis all products shall be sent back to the Service & Support team in Vienna.

Based on the general support strategy the MDC channel is responsible for the first line support. Escalation process via 2nd and 3rd line Support.

A selection of the possible support and help options:

1. Check against the most common user mistakes

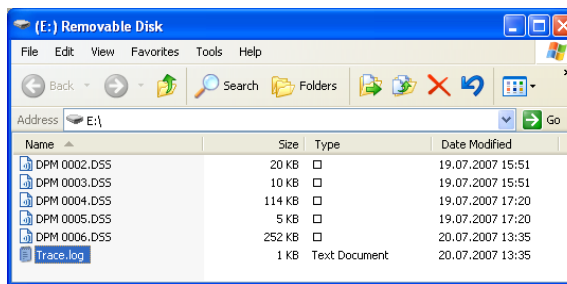
- Was the installation done according to the printed Quick Start Guide?
 - o Check installation against the described basic steps
- Was the first time user (software) Installation Wizard filled in correctly?
 - o Can be re-run through main menu: “General Settings” | “Worklist” | “Start-up” | tick on “Start New user wizard” > click on Apply, close SpeechExec and open again.
- Is the SpeechExec Pro Transcribe v5.0 or higher software used to transcribe the two channel recorded conference files?
- Is an older version of the SpeechExec Pro Dictate software used for DIGITAL POCKET MEMO file download?
- (Software packaged with Digital Pocket Memo 955 must be installed)
 - o Click in the main menu onto the “Help” box and select “About” to open up the version window – here you can check the Digital Pocket Memo device type, Serial number and FW version.

2. Digital Pocket memo hardware logging

To log problems with the Digital Pocket Memo 955 device a hardware error logging is included.

The logging function can be activated as follows:

1. Switch the Digital Pocket Memo on
2. Press and hold the “MENU” button till the current “FILE #...” information is displayed
3. Press two times the “INFO x” button (that is the Smart Button 2) till “DEVICE” information can be read on the LCD





4. Press and hold the “+” button (on front side) till “Logging on” is displayed on the LCD
5. Work with the DIGITAL POCKET MEMO till the problem occurs – try to generate the error
6. Connect the DIGITAL POCKET MEMO to the PC and send the “Trace.log” file (see screen shot) by e-mail to your support contact person.

3. Standard SpeechExec Software error logging

To get information about **problems with the software application “SpeechExec”** the standard software error logging can be used. This logging function is active all the time.

Information can be retrieved as follows:

1. Open up the MS Windows Explorer and search in the folder “Program Files\Philips Speech“ for the file named “SpeechExec.log”
2. Send the “SpeechExec.log” files (can be two in case Dictate and Transcribe software is installed on one PC) by e-mail to your support contact.



Feature Comparison – Digital Pocket Memo 955 compared to the 9370 and 9600 models

	9600	9620	9370	955
RECORDING				
PCM [2 channel (stereo) 1411kbit/s]	No	No	No	✓
MP3 [2 channel (stereo) 128kbit/s]	No	No	No	✓
MP3 [2 channel (stereo) 64kbit/s]	No	No	No	✓
DSS QP [mono 27kbit/s]	✓	✓	No	✓
DSS SP [mono 14kbit/s]	✓	✓	✓	✓
DSS LPm [mono 11kbit/s]	✓	✓	✓	No



	9600	9620	9370	955
RECORDING				
PCM [2 channel (stereo) 1411kbit/s]	No	No	No	✓
MP3 [2 channel (stereo) 128kbit/s]	No	No	No	✓
MP3 [2 channel (stereo) 64kbit/s]	No	No	No	✓
DSS Pro support	✓	✓	No	QP, no encryption
DSS QP encoding	✓	✓	No	✓
DSS encryption	✓	✓	No	No
Button loop through for online-recording [SpeechMike functionality]	✓	✓	No	No
CONVENIENCE				
4-position slide switch	✓	✓	No	No
Configurable slide switch: Philips (default), Philips classic, German	No	✓	No	No
Slider position displayed on LC-Display	✓	✓	No	No
Fast charging through USB possible	✓	✓	No	✓
Slow charging through USB possible	✓	✓	✓	✓
Power supply socket on device	✓	✓	✓	✓
Selectable menu languages	✓	✓	✓	✓
Smart buttons – intuitive operation	✓	✓	✓	✓
Noise reduction during playback	✓	✓	No	✓
SECURITY				
PIN code device access protection	✓	✓	No	No
DSS real time encryption [128 bit]	✓	✓	No	No
Prohibit file alteration – for law enforcement	✓	✓	✓	✓
WORKFLOW				
Index mark setting	✓	✓	✓	✓
Spoken Instruction mark setting	✓	✓	No	No
Number of Keywords / Fields	4x20	4x20	1x10	1x10
Mandatory Keyword polling	✓	✓	No	No
Voice Command Keyword entry	✓	✓	No	No
INTERFACE				
Barcode Scanner support	✓	✓	No	No
LAN Docking Station support	✓	✓	No	No
Maximum memory size supported	2GB	2GB	2GB	2GB
SPEECH-EXEC CONFIGURATION SCREEN OPTIONS				
GENERAL				
Recording Format	QP, SP, LPm	QP, SP, LPm	SP, LPm	PCM, MP3, QP, SP
Microphone Sensitivity	Private Dictate Conference	Private Dictate Conference	Private Dictate Conference	Private Dictate Conference
DSS mode	Classic DSS, DSS Pro	Classic DSS, DSS Pro	Classic DSS	Classic DSS SP, DSS QP
File name: Keyword1 / Prefix	✓/✓	✓/✓	✓/✓	✓/✓



	9600	9620	9370	955
RECORDING				
PCM [2 channel (stereo) 1411kbit/s]	No	No	No	✓
MP3 [2 channel (stereo) 128kbit/s]	No	No	No	✓
MP3 [2 channel (stereo) 64kbit/s]	No	No	No	✓
Dictation number: Continue existing sequence / Start new sequence	✓/✓	✓/✓	✓/✓	✓/✓
Index/Spoken Instructions	✓/✓	✓/✓	✓/No	✓/No
Device beep	✓	✓	✓	✓
Enable noise reduction	✓	✓	No	✓
Voice-activated recording	✓	✓	✓	✓
Record into one file only	✓	✓	✓	✓
Record notification beep	✓	✓	✓	✓
DISPLAY				
Standard / Advanced	✓/✓	✓/✓	✓/✓	-/✓
AM/PM time format	✓/✓	✓/✓	✓/✓	✓/✓
ADVANCED				
Additional User Defined Labels / number of labels	✓/1	✓/1	No	No
KEYWORD DEFINITION				
Keywords / Usage definable	4 / ✓	4 / ✓	1 / ✓	1 / ✓
Number of Keyword entries	20	20	10	10
Keyword options: Barcode / Voice Command / Mandatory	✓/✓/✓	✓/✓/✓	-/-	-/-
DOWNLOAD SETTINGS				
All / EOL / File selection / Keyword 1	✓	✓	✓	✓
Delete File after download option	✓	✓	✓	✓
BUTTON CONFIGURATION				
Enable/disable DIGITAL POCKET MEMO buttons: EOL button: End-of-Letter	✓	✓	✓	✓
Additional function key	✓	✓	No	No (=fixed Index)
4-position style: Philips / Philips Classic / German	No	✓	No	No
Barcode settings	✓	✓	No	No
PROTECTION				
Protect device settings	✓	✓	✓	✓
SECURITY				
DSS Pro encryption setting	✓	✓	No	No
PIN and PUK setting	✓	✓	No	No
Prohibit file alteration – for law enforcement	✓	✓	✓	✓

For additional information, contact your Philips Authorized Distributor.