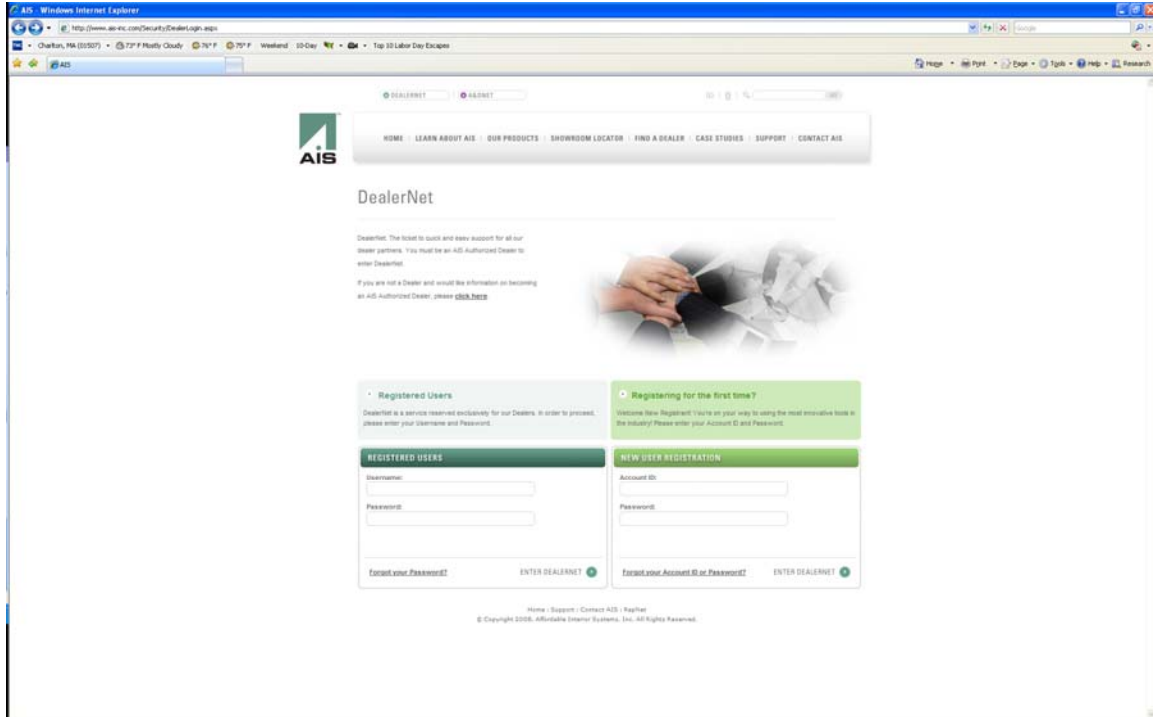


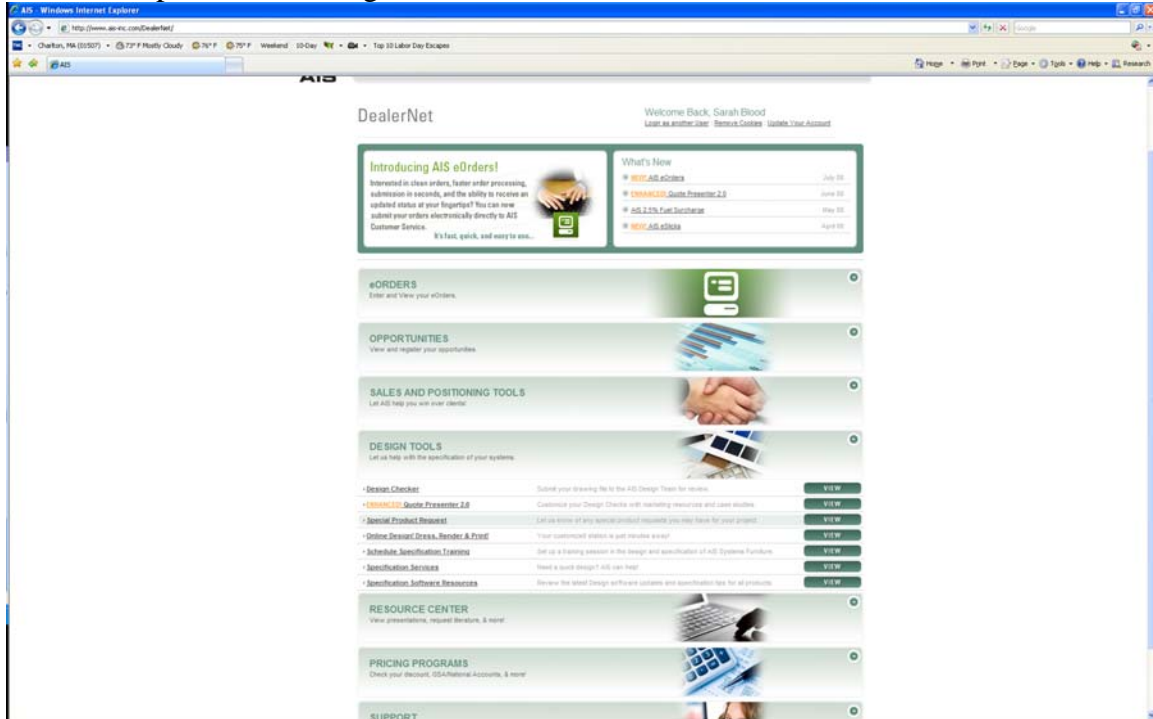
Submitted a Design Check Request to AIS

Go to the AIS website. www.ais-inc.com/dealernet
Log on using your designated username & password

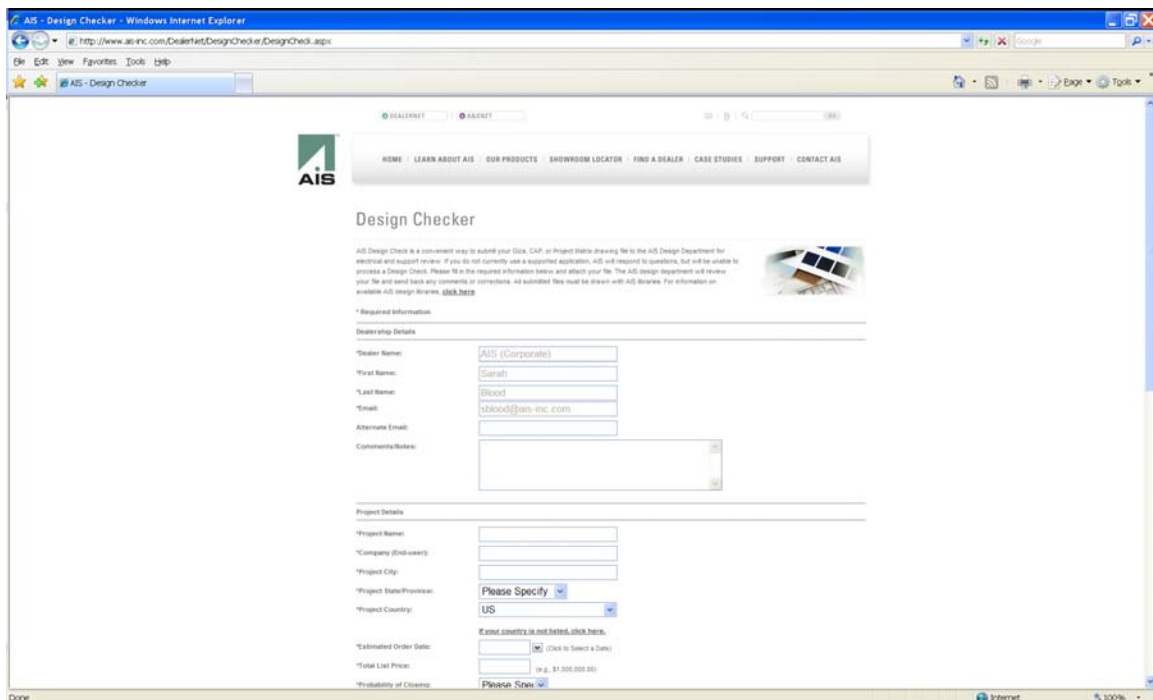


The screenshot shows the AIS DealerNet login page in a Windows Internet Explorer browser window. The browser's address bar displays the URL <http://www.ais-inc.com/DealerLogin.aspx>. The page features the AIS logo in the top left corner and a navigation menu with links for HOME, LEARN ABOUT AIS, OUR PRODUCTS, SHOWROOM LOCATOR, FIND A DEALER, CASE STUDIES, SUPPORT, and CONTACT AIS. The main heading is "DealerNet". Below this, there is a brief description of DealerNet as a service for AIS Authorized Dealers, followed by a small image of hands holding a stack of papers. The page is divided into two main sections: "Registered Users" and "Registering for the first time?". The "Registered Users" section includes a form with fields for "Username:" and "Password:", and a "Forgot your Password?" link. The "Registering for the first time?" section includes a form with fields for "Account ID:" and "Password:", and a "Forgot your Account ID or Password?" link. At the bottom of the page, there is a footer with links for Home, Support, Contact AIS, and DealerNet, along with a copyright notice: "© Copyright 2008, Affiliated Interior Systems, Inc. All Rights Reserved."

Look for the design tools tab, and click on the arrow to drop down the menu. You should see the 1st option is for Design Checker, Click View



Fill out all of the fields with the red * next to them. On this page you will be able to submit the drawing file, remember AIS only checks Giza (.cdb) files, Project Matrix and CAP (.dwg) files with AIS symbols. We will not convert any layouts for you to our product symbols.



Once you have clicked submit you will get an automatic response which means your design check was successfully submitted. Design checks typically have a 24 hour turn around time.

Upon completion from one of the AIS designers you will get a completed quote back which will include your updated drawing file, a PDF which contains 2D, 3D prints and an updated bill of materials.