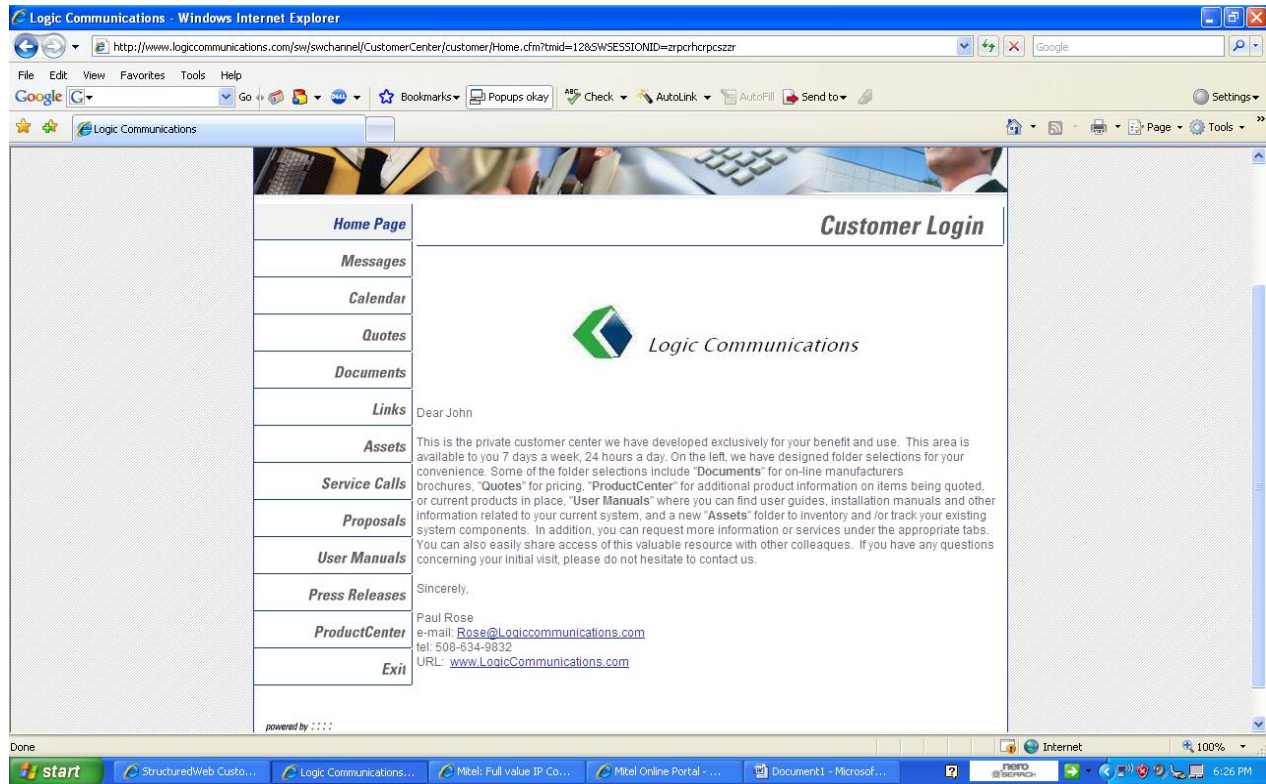
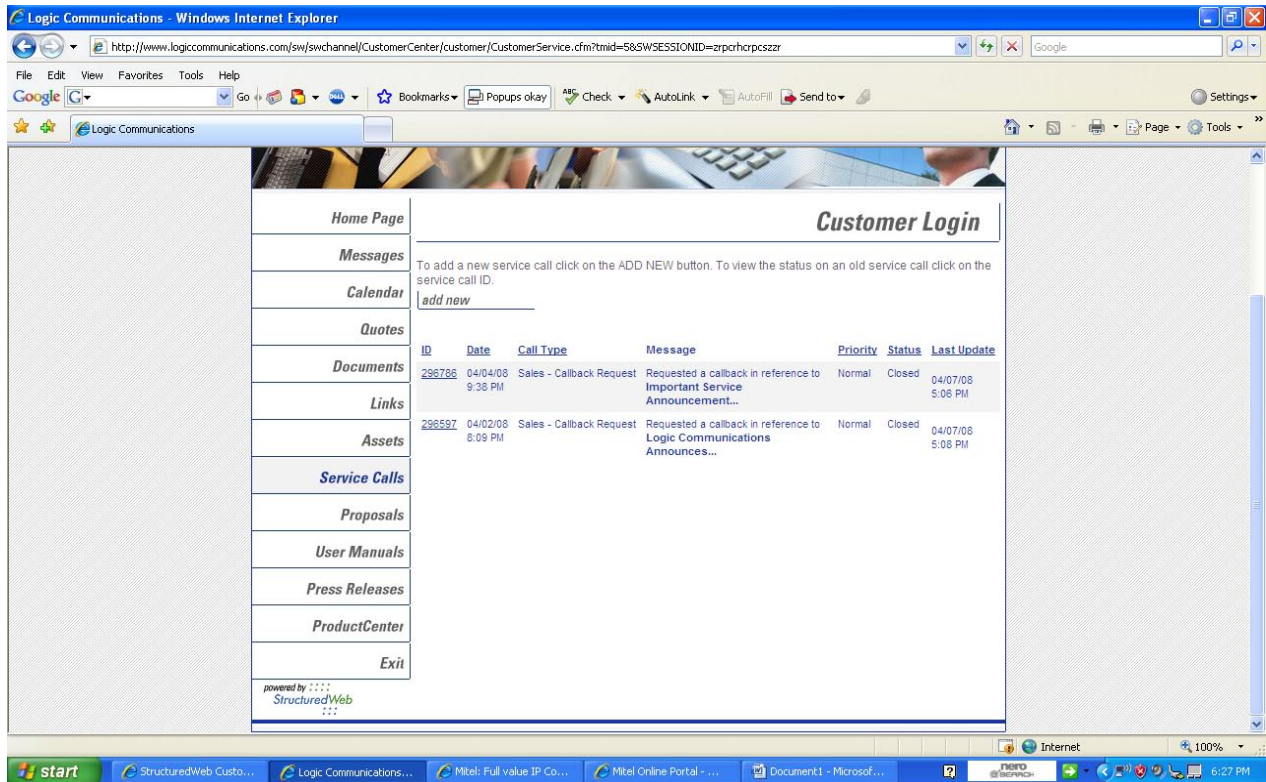


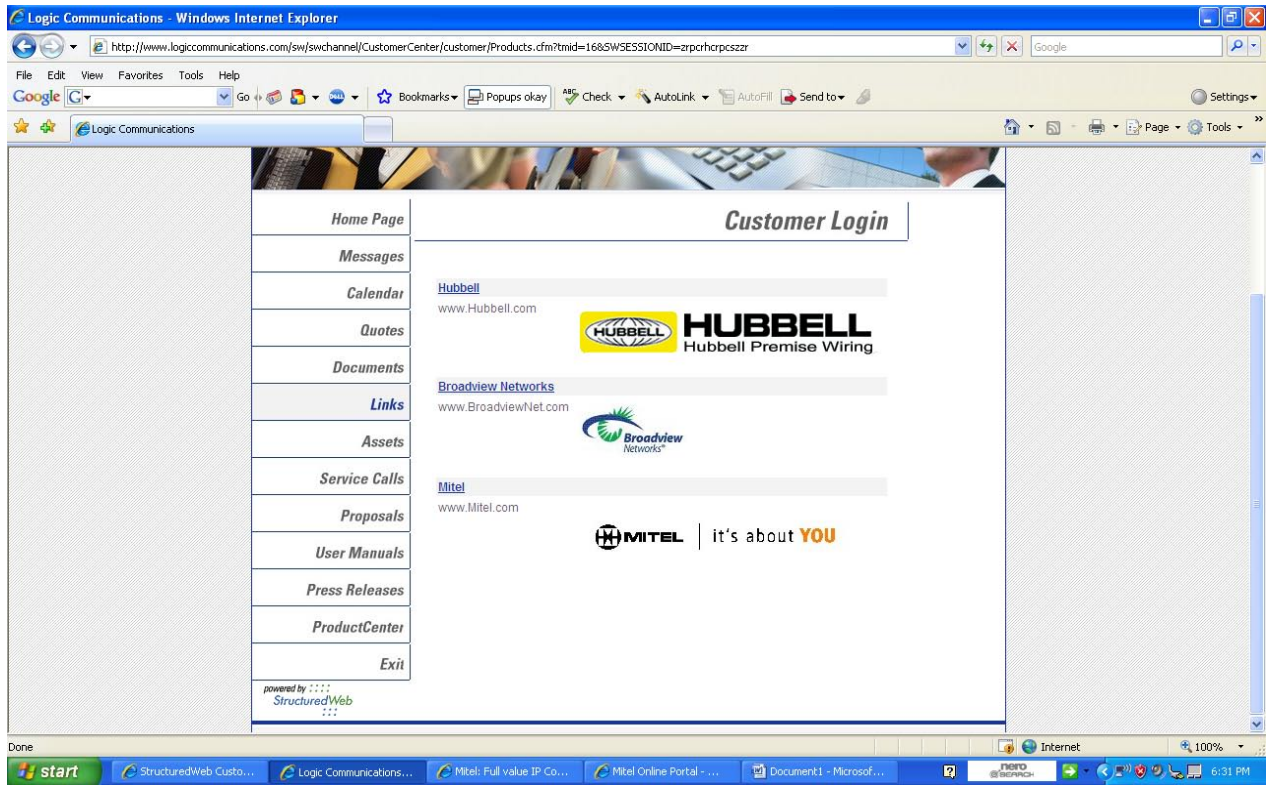
Examples and explanations of some of the tabs and information available inside the customer portal are given below. The customer portal is available to all Logic clients at no charge.



HOME PAGE The home page is displayed upon log in and provides a quick overview of the portal and tabs located to the left.



SERVICE CALLS TAB The "Service Calls" tab is available to initiate on-line requests for non-emergency service and to receive updates on orders in progress.



LINKS TAB The “Links” tab offers links to other manufacturer and service provider sites pertinent to any quotes or proposals supplied.

The screenshot shows a web browser window titled "Logic Communications - Windows Internet Explorer". The address bar displays the URL: http://www.logiccommunications.com/sw/switchannel/CustomerCenter/customer/Asset_List.dfm?tmid=178&SWSESSIONID=zrprchrpcsszr. The page content includes a navigation menu on the left and a main section titled "Customer Login".

Customer Login

Assets Locations Inventory Transactions

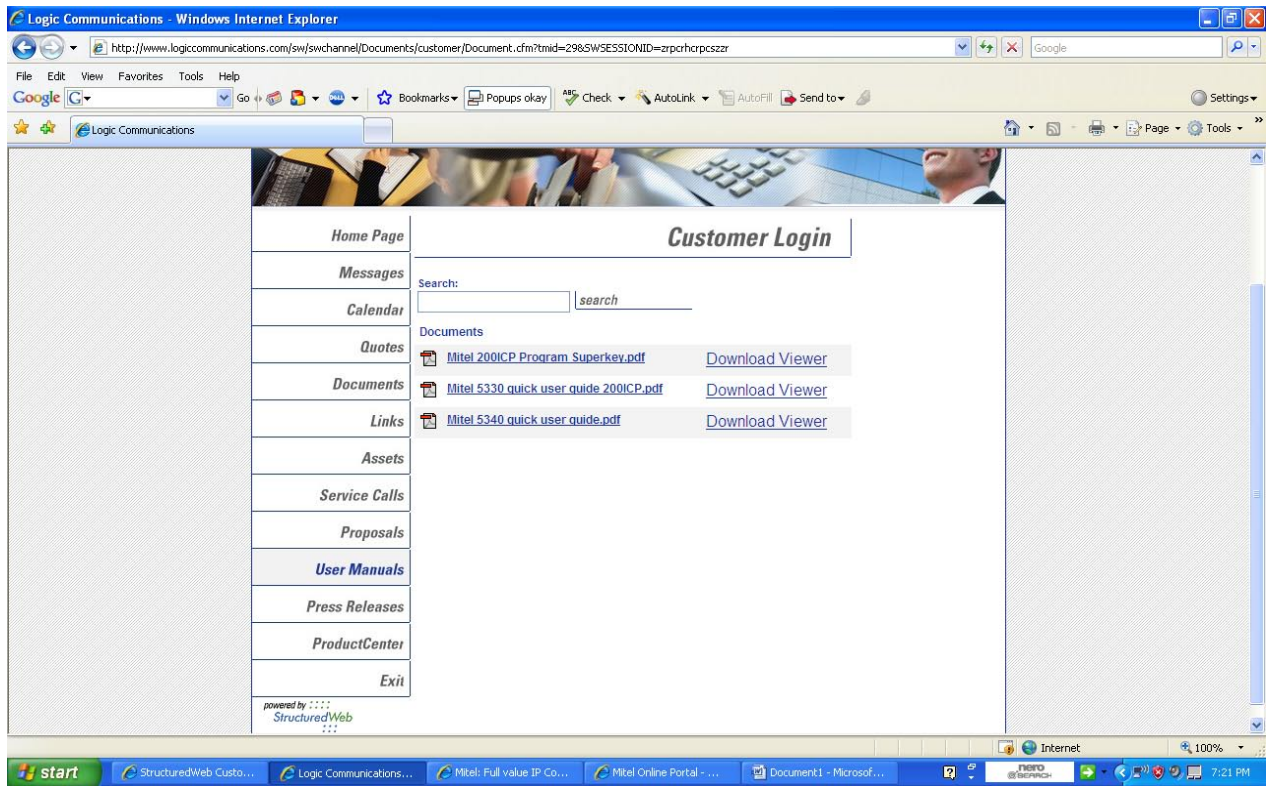
The Assets page displays all the assets being tracked for you. To view the details of an asset, click on its name.

To view a summary of all your current assets, click on the Summary tab. To view the assets stored at a particular location, click on the Locations tab.

Asset	Type	Description	Quantity
Broadview Networks	carrier circuits	Dynamic IP Digital Circuit w/6 Channels	1
Mitel	Vendor Supplied Equipment - Logic Communications	3300 ICP R9.0 Contoller	1
Mitel	Vendor Supplied Equipment - Logic Communications	Teleworker Application R4.0	1
Mitel	Vendor Supplied Equipment - Logic Communications	5330	6

The browser's taskbar at the bottom shows several open applications: start, StructuredWeb Custo..., Logic Communications..., Mitel: Full value IP Co..., Mitel Online Portal..., Document1 - Microsof..., and Internet. The system tray shows the time as 7:15 PM.

ASSETS TAB The "Assets" tab displays a full inventory of existing system components and carrier circuits by location.



USER MANUALS TAB The “User Manuals” tab consists of user guides, system manuals, program guides, etc. related to the systems in place.